

File Edit View History Bookmarks Tools Help SMART Ink

Sample Programs for CIS56

www.pgrocer.net/Cis56/cis56netsamp.html

Search

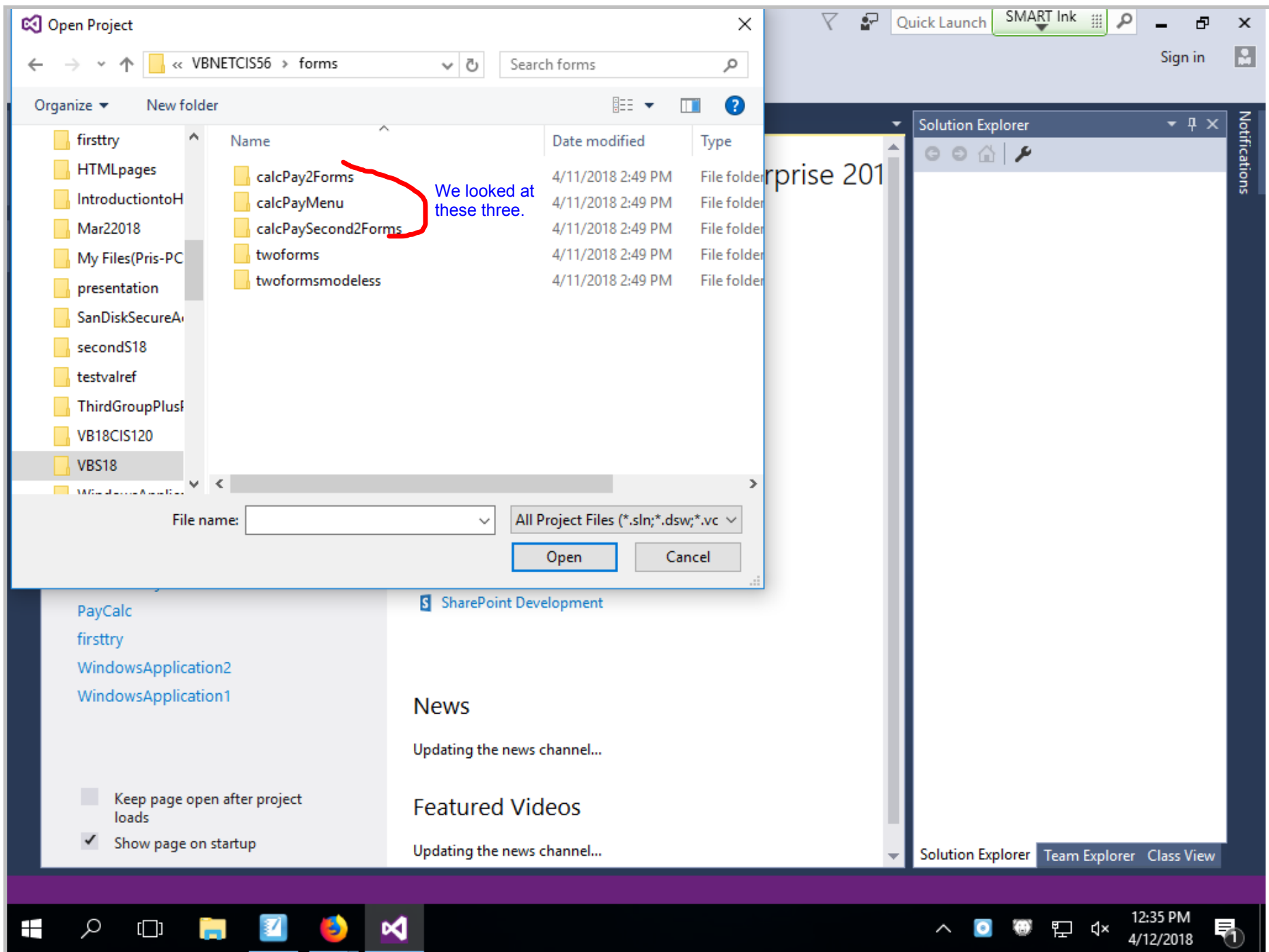
Bookmarks

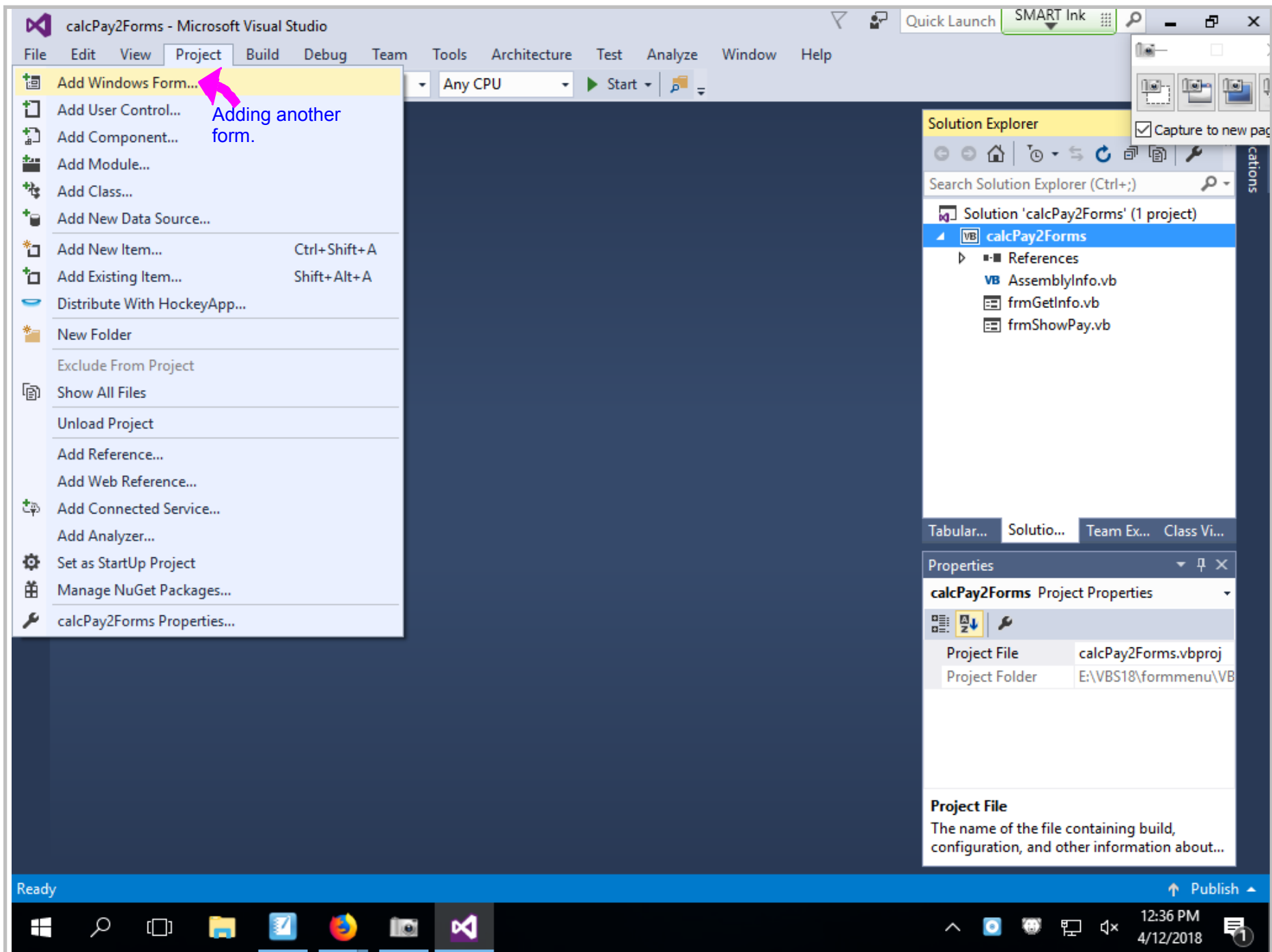
Search bookmarks

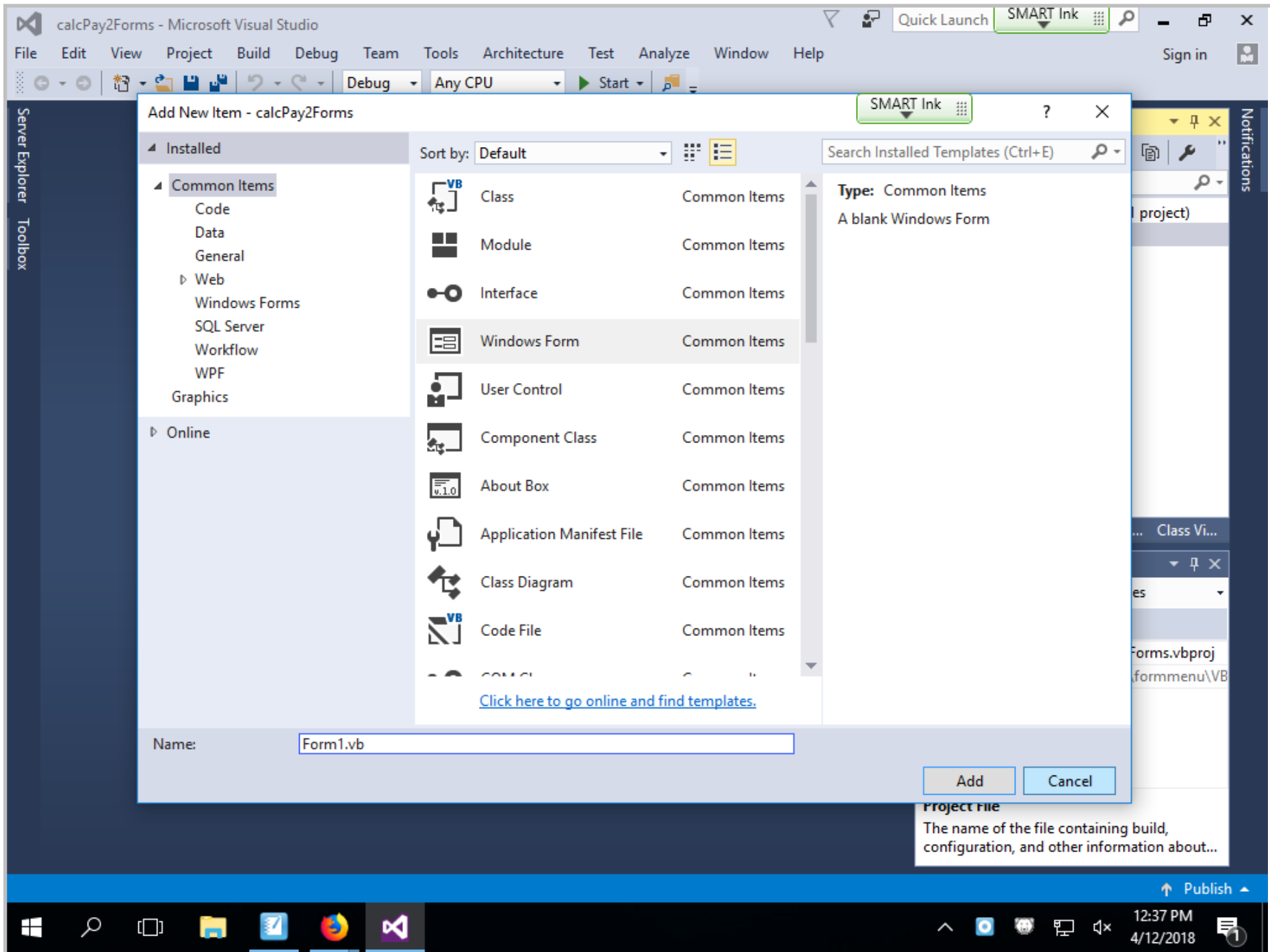
- Bookmarks Toolbar
- Bookmarks Menu
- Other Bookmarks

	<p>More if examples (html version)</p> <p>Introduction to loops examples (zipped)</p> <p>Introduction to loops examples (word version)</p> <p>Introduction to loops examples (html version)</p> <p>Loops continued examples and number guess (zipped)</p> <p>Guess number (word version)</p> <p>Guess number (html version)</p> <p>Loops continued (word version)</p> <p>Loops continued (html version)</p> <p>Loops and combo (zipped)</p> <p>Loops and combo (word version)</p> <p>Loops and combo (html version)</p> <p>Breaks and validation code (zipped)</p> <p>Break and validation code (word version)</p> <p>Break and validation code (html version)</p>	
Loops, combo boxes etc.		
Procedures and Functions	<p>Procedure and function examples (zipped)</p> <p>Procedure and function examples (word version)</p> <p>Procedure and function examples (html version)</p>	
Forms and Menus	<p>Form and menu examples (zipped)</p> <p>Form and menu examples (word version)</p> <p>Form and menu examples (html version)</p>	Looking at some of these.
Arrays	<p>Arrays (zipped)</p> <p>Introduction to arrays (word version)</p> <p>Introduction to arrays (html version)</p> <p>Introduction to arrays continued (word version)</p> <p>Introduction to arrays continued (html version)</p> <p>Two dimensional arrays (word version)</p> <p>Two dimensional arrays (html version)</p> <p>Sort using array (word version)</p> <p>Sort using array (html version)</p>	

12:33 PM 4/12/2018







calcPay2Forms - Microsoft Visual Studio

File Edit View Project Build Debug Team Tools Architecture Test Analyze Window Help

Debug Any CPU Start

Server Explorer Toolbox

calcPay2Forms* [X]

Application Configuration: N/A Platform: N/A

Compile

Debug

References calcPay2Forms

Resources

Services .NET Framework 2.0

Settings

Signing frmGetInfo

My Extensions

Security

Publish

Code Analysis

Assembly name: calcPay2Forms

Root namespace: calcPay2Forms

Target framework: .NET Framework 2.0

Application type: Windows Forms Application

Startup object: frmGetInfo

Icon: (Default Icon)

Assembly Information... View Windows Settings

Enable application framework

Windows application framework properties

Enable XP visual styles

Make single instance application

Save My.Settings on Shutdown

Authentication mode: Windows

Shutdown mode: When startup form closes

Splash screen: (None)

View Application Events

Solution Explorer

Search Solution Explorer (Ctrl+;)

Solution 'calcPay2Forms' (1 project)

- calcPay2Forms
 - My Project
 - References
 - AssemblyInfo.vb
 - frmGetInfo.vb
 - frmShowPay.vb

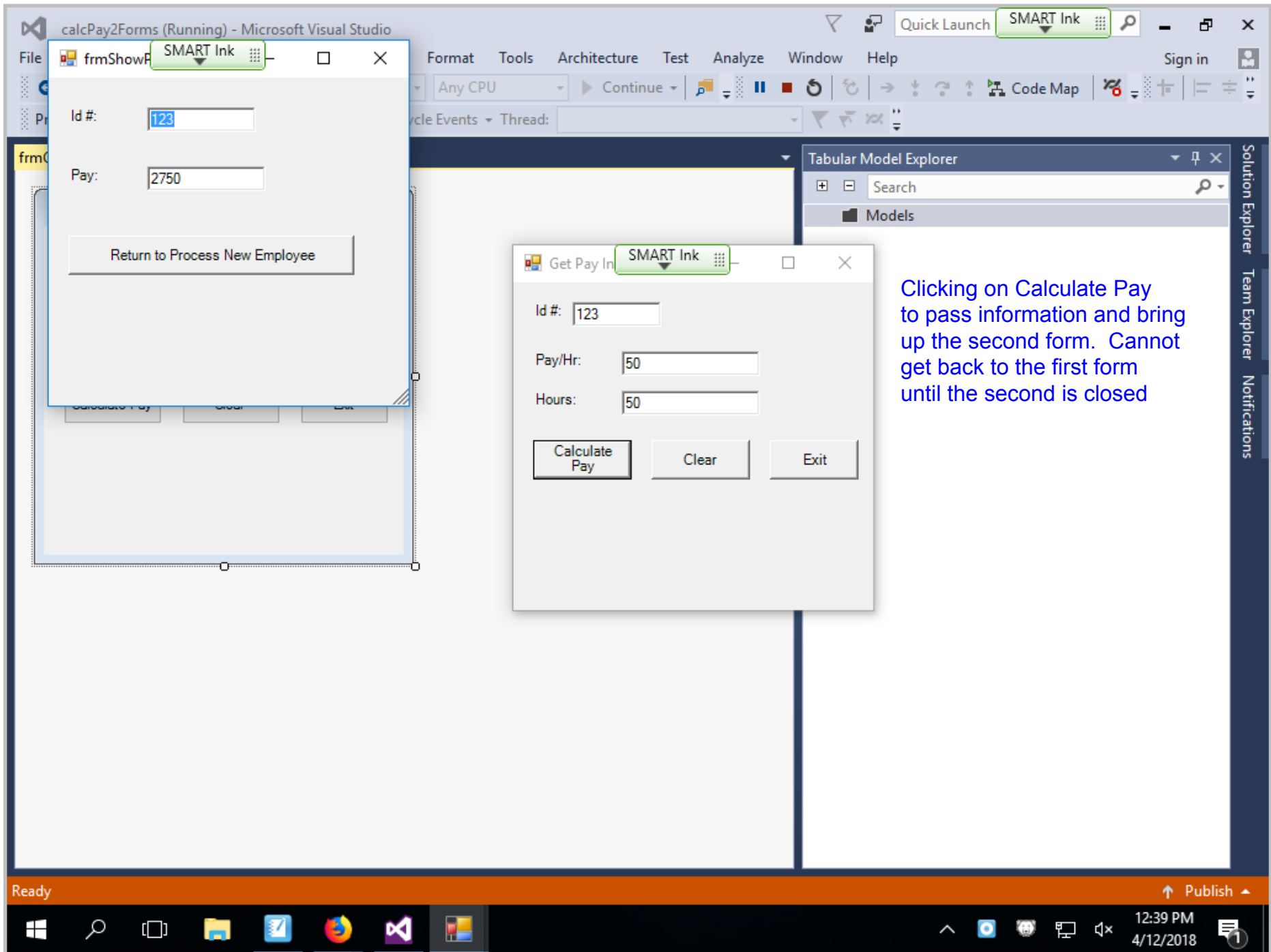
Right click on calcPay2Forms and select properties to bring up the screen that lets you change the startup form.

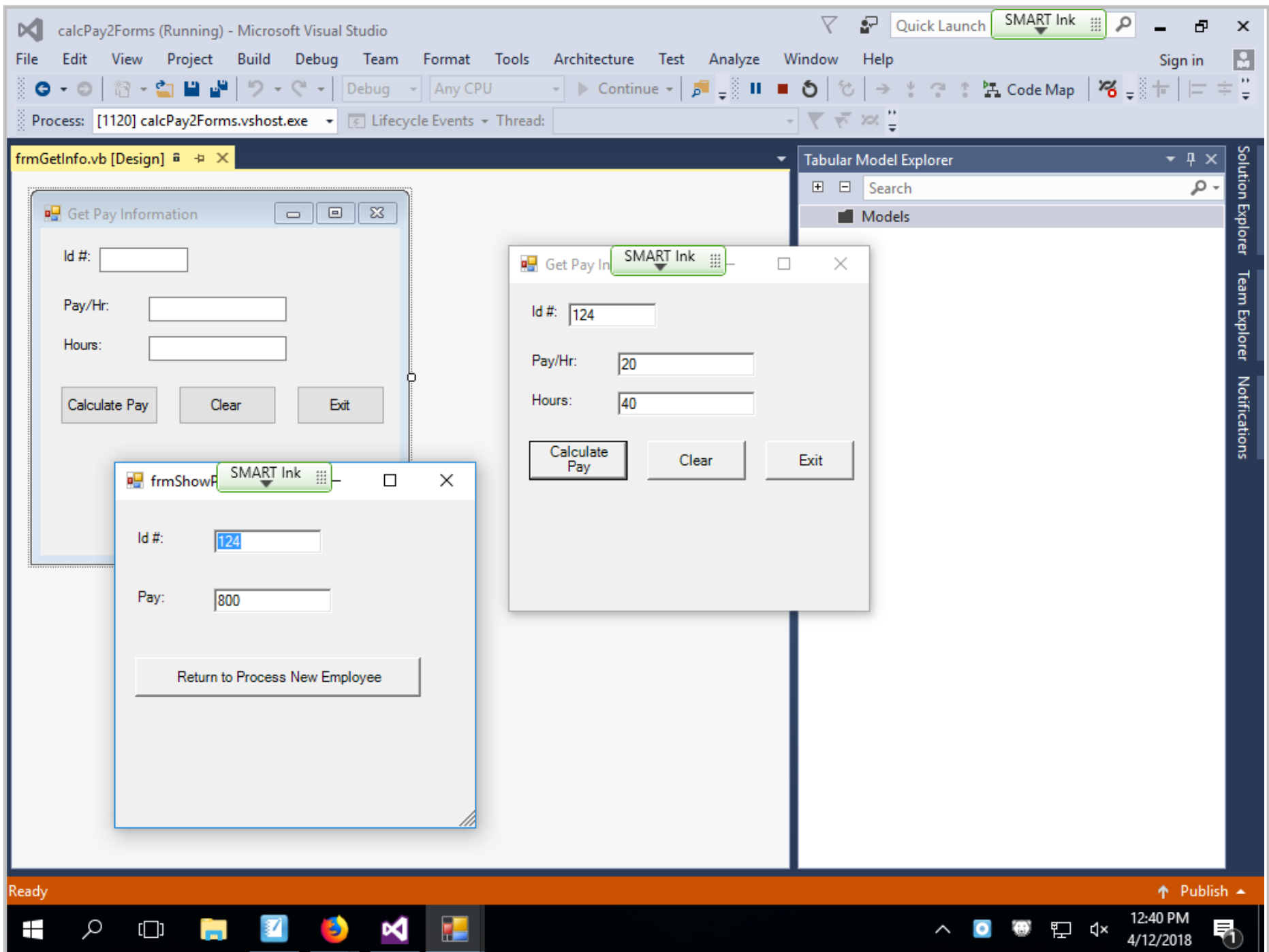
Tabular... Solutio... Team Ex... Class Vi...

Properties

Ready

12:38 PM 4/12/2018





calcPay2Forms - Microsoft Visual Studio

File Edit View Project Build Debug Team Tools Architecture Test Analyze Window Help

Debug Any CPU Start

Server Explorer Toolbox

frmGetInfo.vb [Design] btnCalcPay Click

```

1  Public Class frmGetInfo
2      Inherits System.Windows.Forms.Form
3
4      Windows Form Designer generated code
143
144     Private Sub btnExit_Click(ByVal sender As System.Object, ByVal e As System.Event
145         Me.Close()
146     End Sub
147
148     Private Sub btnClear_Click(ByVal sender As System.Object, ByVal e As System.Event
149         txtId.Clear()
150         txtHrs.Clear()
151         txtPayHr.Clear()
152     End Sub
153
154     Private Sub btnCalcPay_Click(ByVal sender As System.Object, ByVal e As System.Event
155         Dim wkPay As Single
156         Dim showPayForm As New frmShowPay
157         showPayForm.txtIdReceived.Text = txtId.Text
158         If txtHrs.Text > 40 Then
159             wkPay = CDec(txtPayHr.Text) * 40 + (CDec(txtHrs.Text) - 40) * CDec(txtPay
160         Else
161             wkPay = CDec(txtPayHr.Text) * CDec(txtHrs.Text)
162         End If
163         showPayForm.txtPay.Text = wkPay
164         showPayForm.ShowDialog()
165     End Sub
166
167 End Class
168

```

1 reference

0 references

0 references

0 references

Define a new instance of the second form (object)

To put something on another form use the name you defined as an instance then dot and then field you want to place the data in.

Solution Explorer

Search Solution Explorer (Ctrl+;)

Solution 'calcPay2Forms' (1 project)

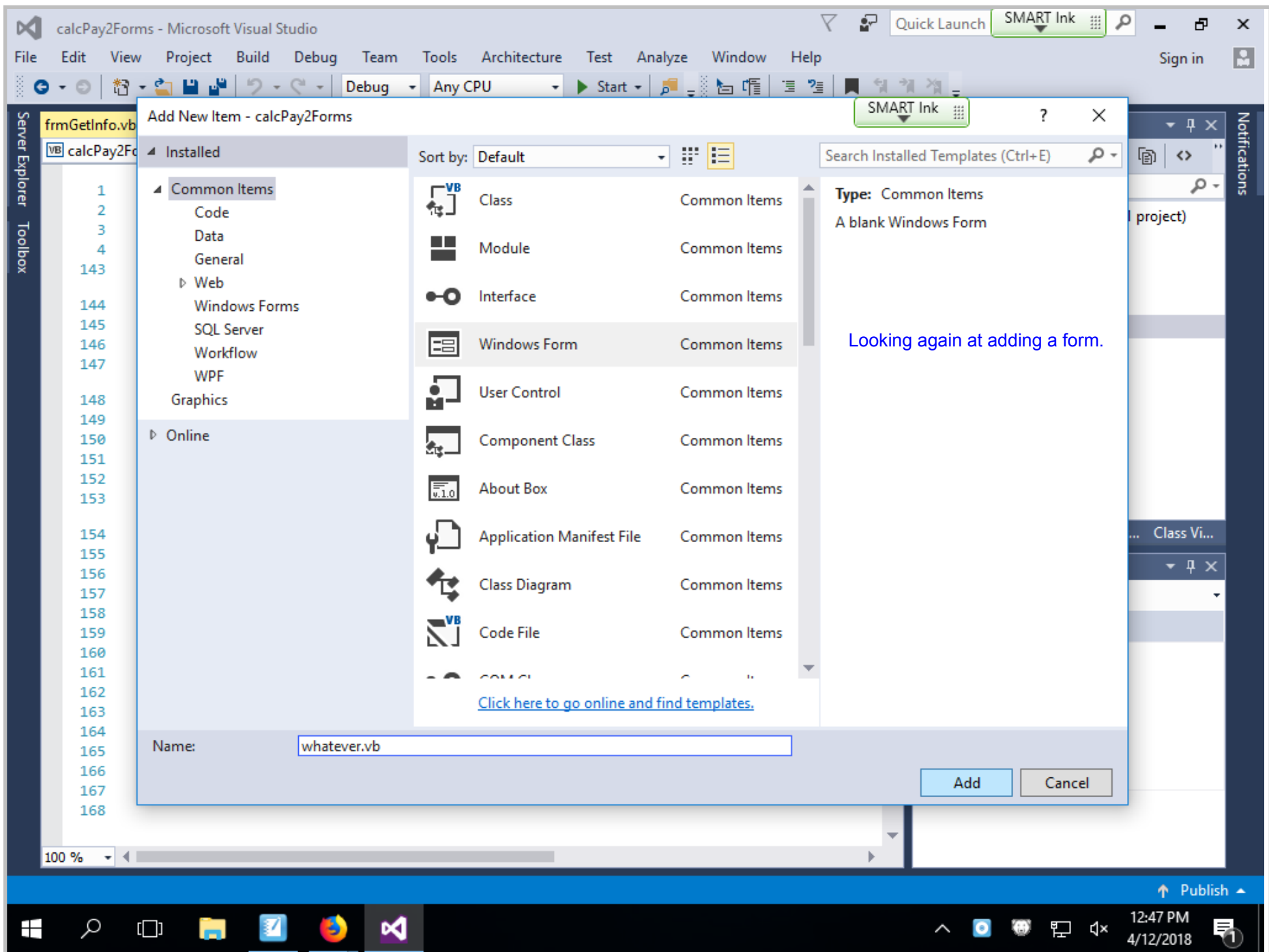
- calcPay2Forms
 - My Project
 - References
 - AssemblyInfo.vb
 - frmGetInfo.vb
 - frmShowPay.vb

Properties

Tabular... Solutio... Team Ex... Class Vi...

Ready Ln 155 Col 9 Ch 9 INS Publish

12:47 PM 4/12/2018



The screenshot displays the Microsoft Visual Studio IDE. The main window is titled "calcPay2Forms (Running) - Microsoft Visual Studio". The menu bar includes File, Edit, View, Project, Build, Debug, Team, Tools, Architecture, Test, Analyze, Window, and Help. The toolbar shows various icons for file operations, debugging, and development. The "Process" window at the top indicates the application is running on "Any CPU".

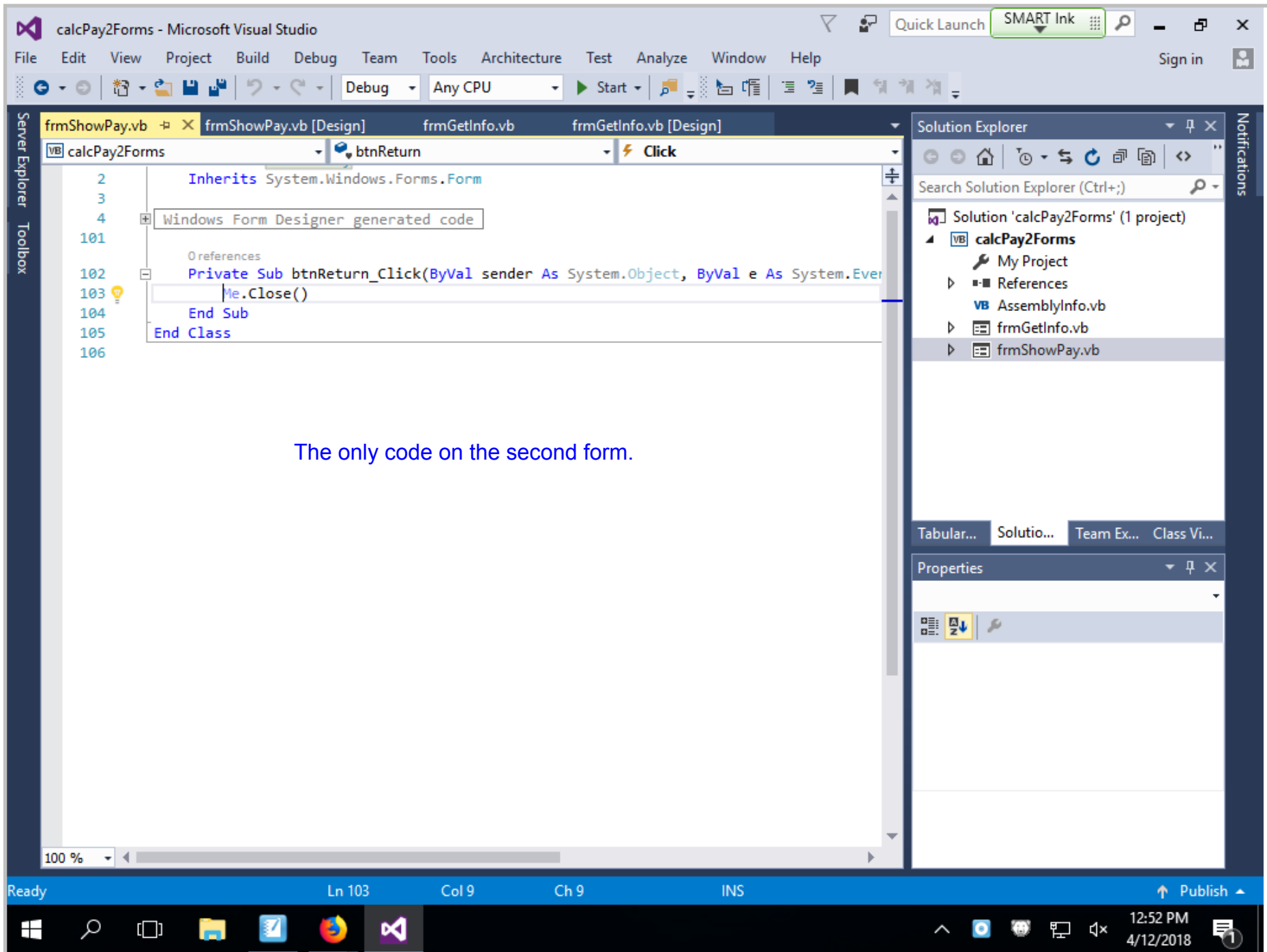
The code editor shows a VB.NET class with a private sub procedure:

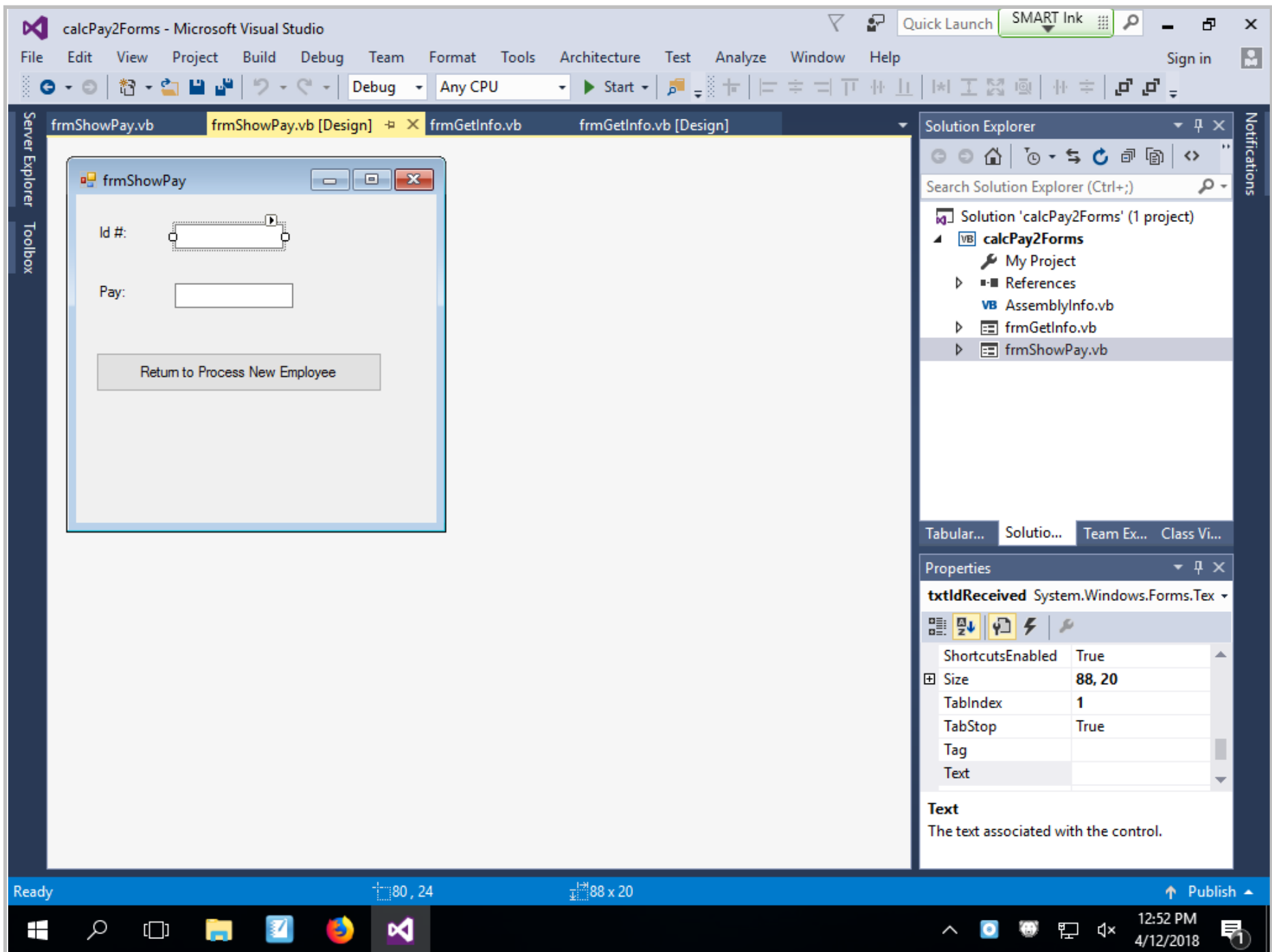
```
164 Private Sub btnCalcPay_Click(ByVal sender As System.Object, ByVal e As System.EventArgs) Handles btnCalcPay.Click
165     Dim wkPay As Single
166     Dim showPayForm As New frmShowPay
167     showPayForm.txtIdReceived.Text = txtId.Text
168     If txtHrs.Text > 40 Then
169         wkPay = CDec(txtPayHr.Text) * 40 + (CDec(txtHrs.Text) - 40) * CDec(txtPayHr.Text)
170     Else
171         wkPay = CDec(txtPayHr.Text) * CDec(txtHrs.Text)
172     End If
173     showPayForm.txtPay.Text = wkPay
174     showPayForm.ShowDialog()
175 End Sub
```

A dialog box titled "frmShowPay" is overlaid on the code editor. It contains two text boxes: "Id #:" with the value "122" and "Pay:" with the value "1200". Below the text boxes is a button labeled "Return to Process New Employee".

The "Tabular Model Explorer" window on the right shows a search bar and a "Models" folder. The "Solution Explorer" window on the far right shows the project structure.

The status bar at the bottom indicates "Ready", "Ln 155", "Col 9", "Ch 9", "INS", and "Publish". The Windows taskbar at the bottom shows the system tray with the time "12:51 PM" and date "4/12/2018".





calcPay2Forms - Microsoft Visual Studio

File Edit View Project Build Debug Team Tools Architecture Test Analyze Window Help Sign in

Debug Any CPU Start

Server Explorer Toolbox

frmShowPay.vb frmShowPay.vb [Design] frmGetInfo.vb frmGetInfo.vb [Design]

calcPay2Forms btnCalcPay Click

```
3
4 Windows Form Designer generated code
143
    References
144 Private Sub btnExit_Click(ByVal sender As System.Object, ByVal e As System.Event
145     Me.Close()
146 End Sub
147
    References
148 Private Sub btnClear_Click(ByVal sender As System.Object, ByVal e As System.Event
149     txtId.Clear()
150     txtHrs.Clear()
151     txtPayHr.Clear()
152 End Sub
153
    References
154 Private Sub btnCalcPay_Click(ByVal sender As System.Object, ByVal e As System.Eve
155     Dim wkPay As Single
156     Dim showPayForm As New frmShowPay
157     showPayForm.txtIdReceived.Text = txtId.Text
158     If txtHrs.Text > 40 Then
159         wkPay = CDec(txtPayHr.Text) * 40 + (CDec(txtHrs.Text) - 40) * CDec(txtPay
160     Else
161         wkPay = CDec(txtPayHr.Text) * CDec(txtHrs.Text)
162     End If
163     showPayForm.txtPay.Text = wkPay
164     showPayForm.ShowDialog()
165 End Sub
166
167 End Class
168
```

Solution Explorer

Search Solution Explorer (Ctrl+;)

Solution 'calcPay2Forms' (1 project)

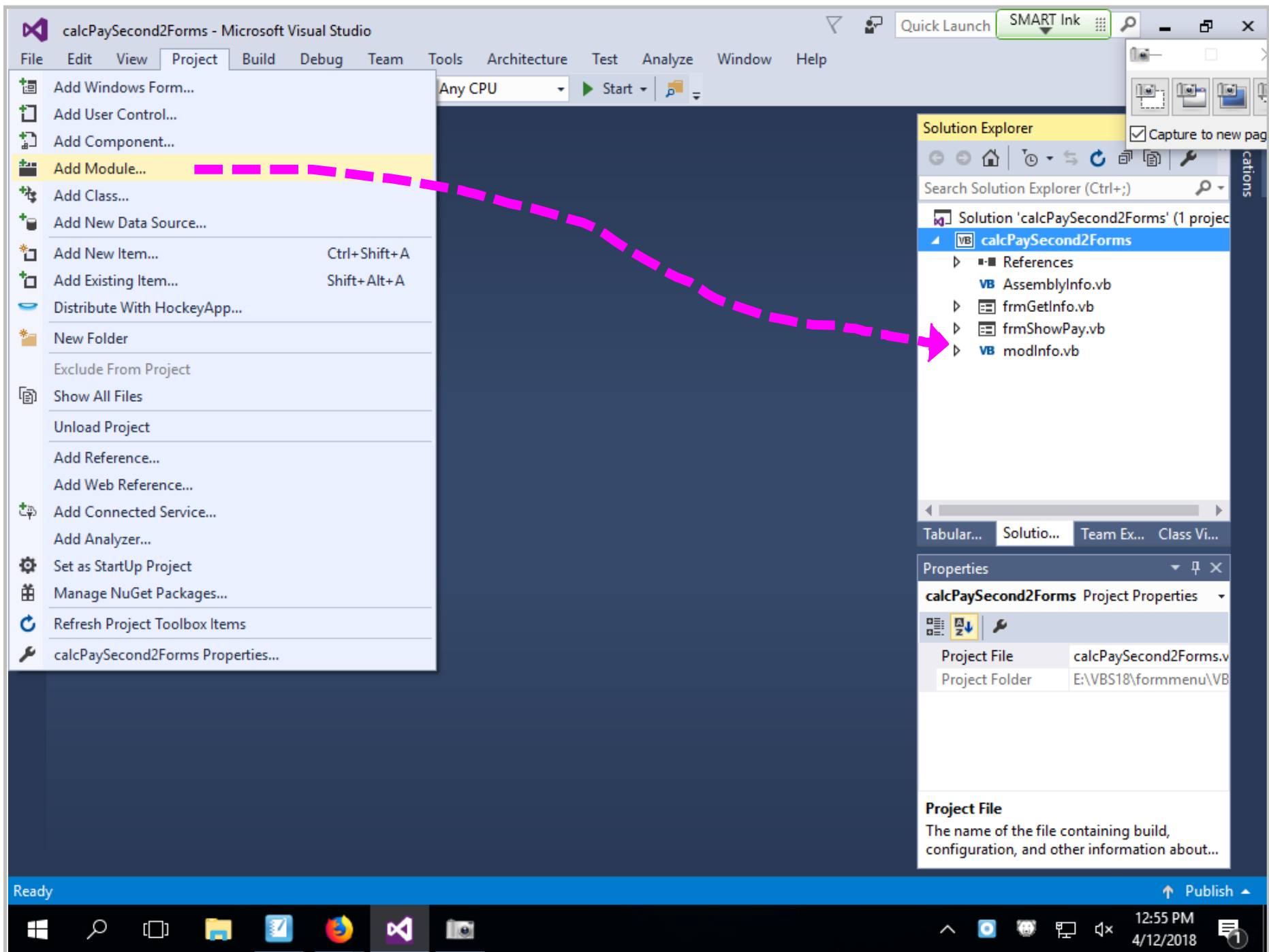
- calcPay2Forms
 - My Project
 - References
 - AssemblyInfo.vb
 - frmGetInfo.vb
 - frmShowPay.vb

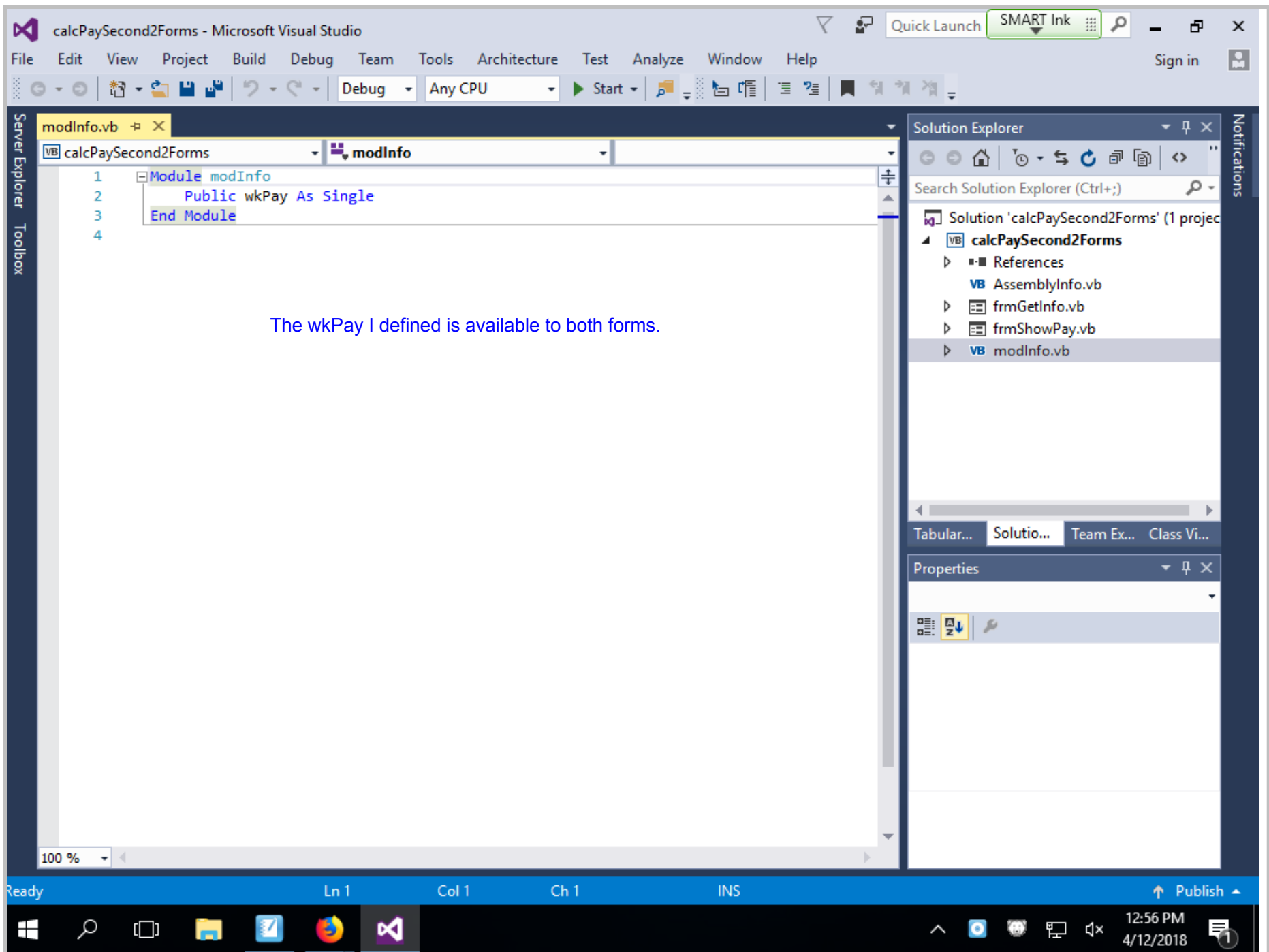
Properties

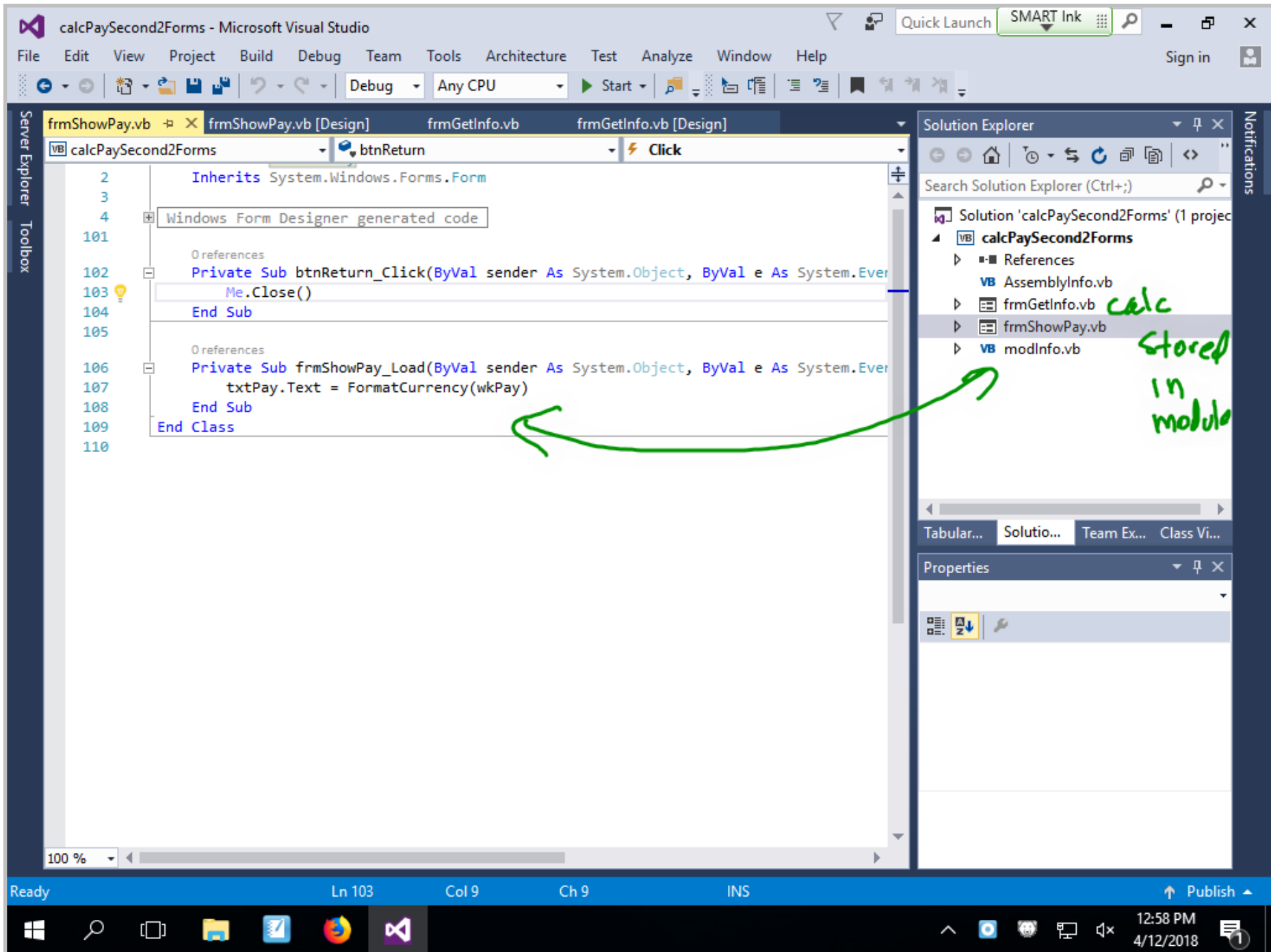
Tabular... Solutio... Team Ex... Class Vi...

Ready Ln 155 Col 9 Ch 9 INS Publish

12:54 PM 4/12/2018







calcPaySecond2Forms - Microsoft Visual Studio

File Edit View Project Build Debug Team Tools Architecture Test Analyze Window Help

Debug Any CPU Start

Server Explorer Toolbox

frmShowPay.vb frmShowPay.vb [Design] frmGetInfo.vb frmGetInfo.vb [Design]

calcPaySecond2Forms btnCalcPay Click

```
4
5
146
    Windows Form Designer generated code
147
    0 references
147 Private Sub btnExit_Click(ByVal sender As System.Object, ByVal e As System.Event
148     Me.Close()
149 End Sub
150
    0 references
151 Private Sub btnClear_Click(ByVal sender As System.Object, ByVal e As System.Event
152     txtId.Clear()
153     txtHrs.Clear()
154     txtPayHr.Clear()
155 End Sub
156
    0 references
157 Private Sub btnCalcPay_Click(ByVal sender As System.Object, ByVal e As System.Event
158     Dim showPayForm As New frmShowPay
159     showPayForm.txtIdReceived.Text = txtId.Text
160     If txtHrs.Text > 40 Then
161         wkPay = CDec(txtPayHr.Text) * 40 + ((CDec(txtHrs.Text) - 40) * CDec(txtPayHr
162     Else
163         wkPay = CDec(txtPayHr.Text) * CDec(txtHrs.Text)
164     End If
165     showPayForm.ShowDialog()
166 End Sub
167 End Class
168
```

0 references

0 references

0 references

The wkPay is calculated and stored where it is defined (modInfo.vb). The second form can then access it.

Defined wk Pay

Starts

Solution Explorer

Search Solution Explorer (Ctrl+;)

Solution 'calcPaySecond2Forms' (1 project)

- VB calcPaySecond2Forms
 - References
 - VB AssemblyInfo.vb
 - frmGetInfo.vb
 - frmShowPay.vb
 - VB modInfo.vb

Properties

Tabular... Solutio... Team Ex... Class Vi...

Ready Ln 158 Col 9 Ch 9 INS Publish

1:00 PM 4/12/2018

calcPaySecond2Forms (Running) - Microsoft Visual Studio

File Edit View Project Build Debug Team Tools Architecture Test Analyze Window Help

Process: [9676] calcPaySecond2Forms.vsho Lifecycle Events Thread:

frmShowPay.vb frmShowPay.vb [Design] frmGetInfo.vb

calcPaySecond2Forms (frmShowPay Events) Load

```
2 Inherits System.Windows.Forms.Form
3
4 Windows Form Designer generated code
101
102 0 references
103 Private Sub btnReturn_Click(ByVal sender As System.Object, ByVal
104     Me.Close()
105 End Sub
106 0 references
107 Private Sub frmShowPay_Load(ByVal sender As System.Object, ByVal
108     txtPay.Text = FormatCurrency(wkPay)
109 End Sub
110 End Class
```

When I comment this out we see nothing.

Id #: 111

Pay/Hr: 35

Hours: 40

Calculate Pay Clear Exit

Return to Process New Employee

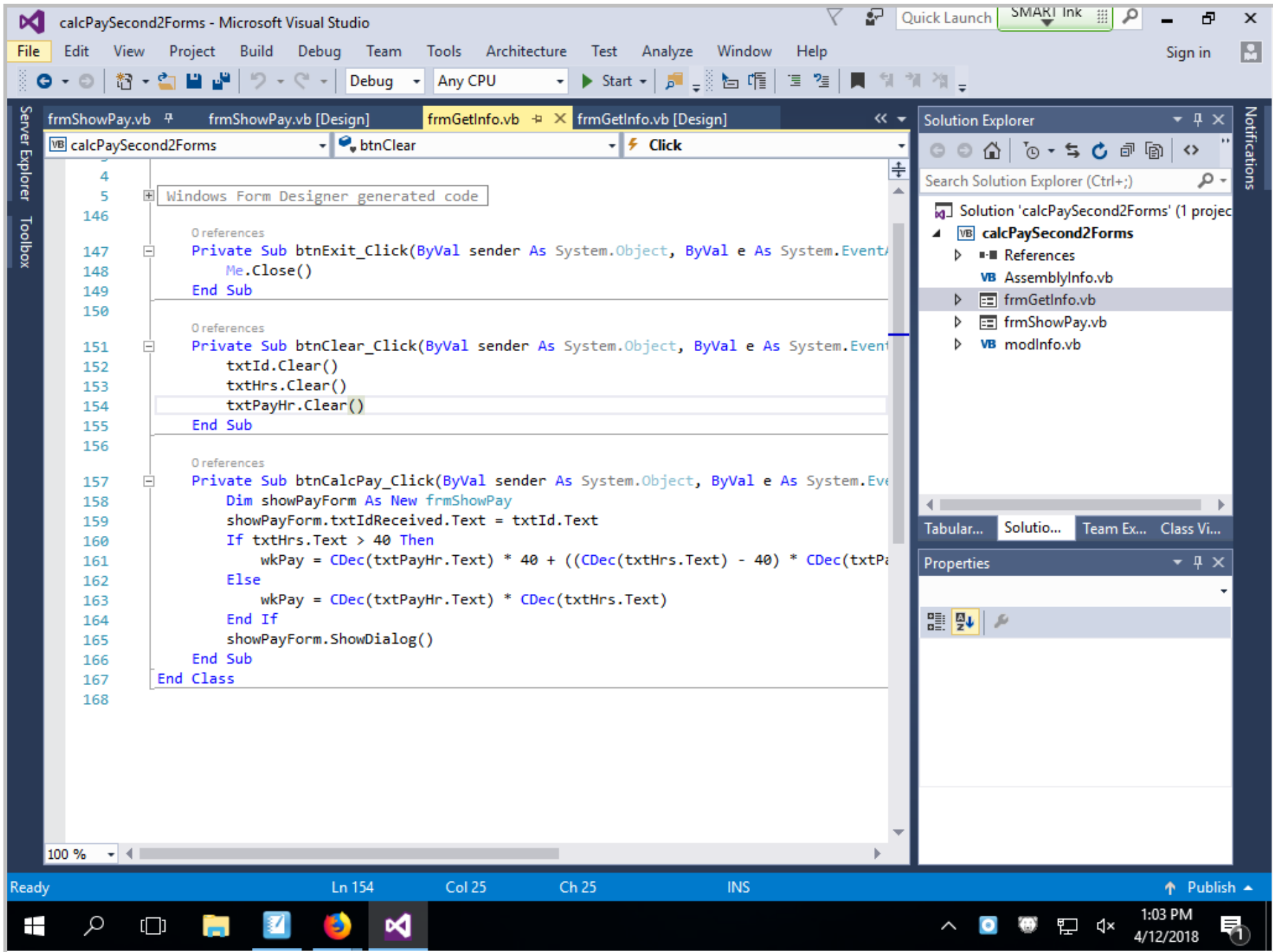
Ready Ln 107 Col 10 Ch 10 INS Publish

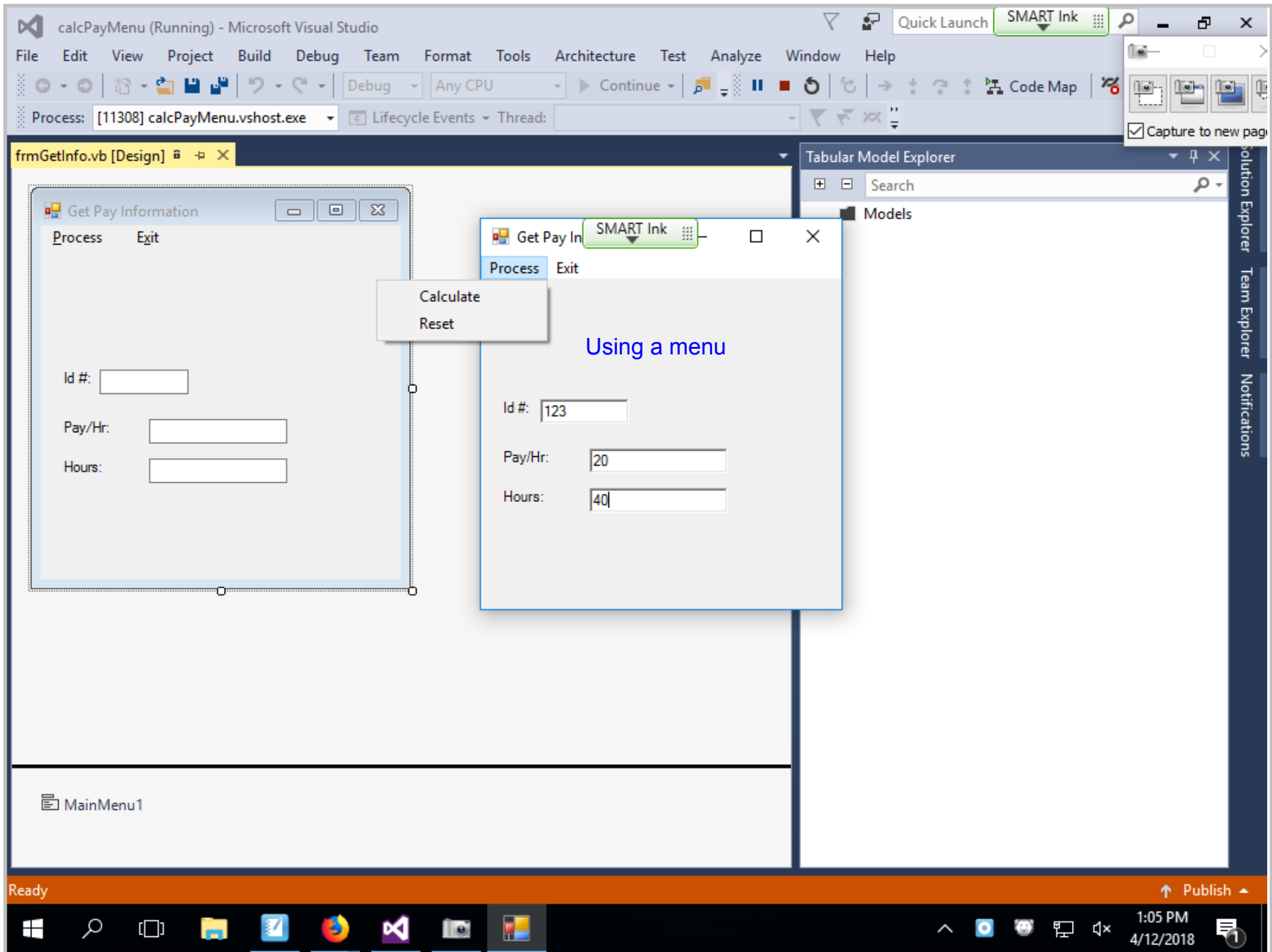
1:01 PM 4/12/2018

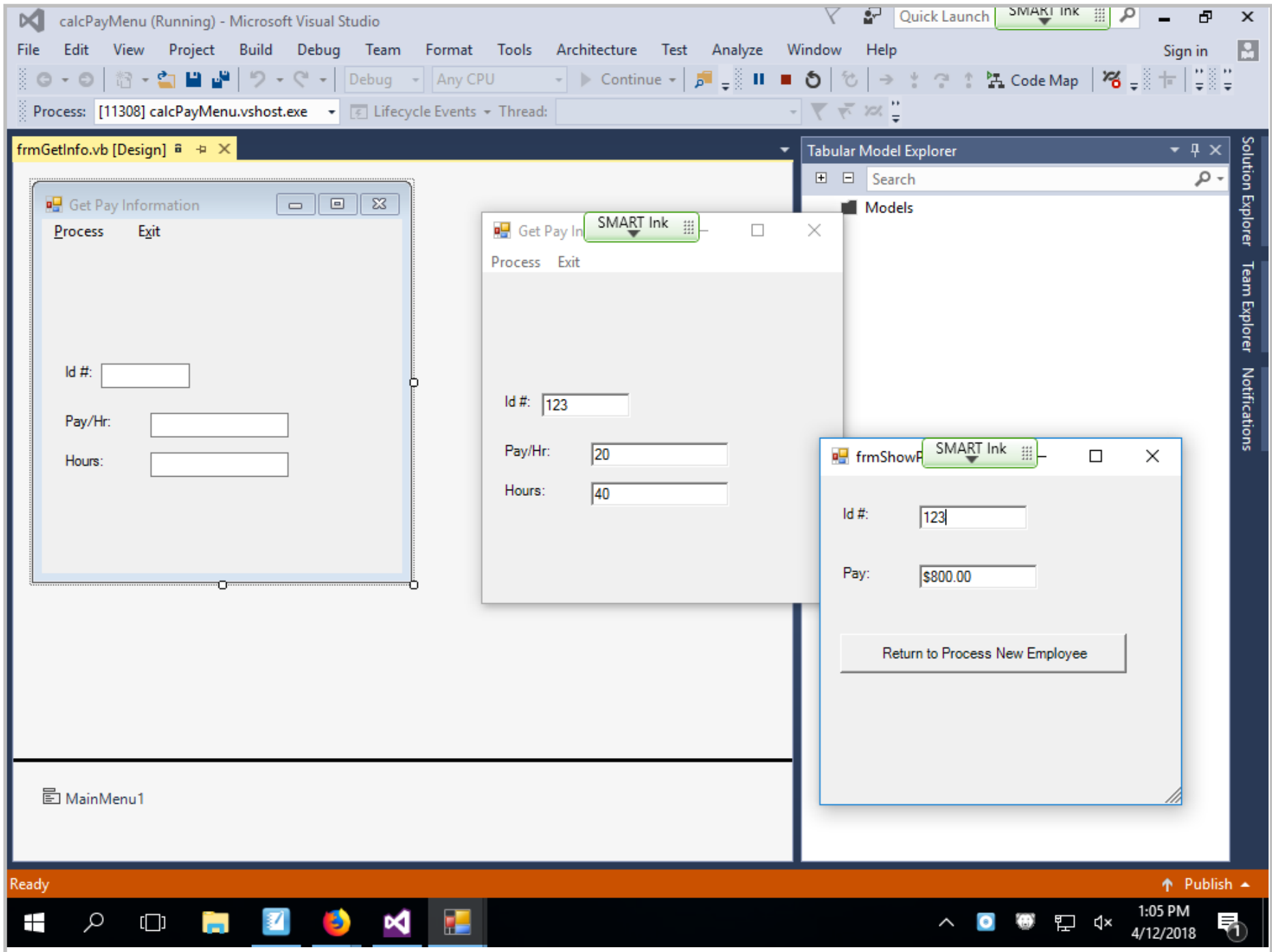
The screenshot displays the Microsoft Visual Studio IDE with the following components:

- Top Window:** A form titled "frmShowP" with a "SMART Ink" watermark. It contains two text boxes: "Id #:" with the value "111" and "Pay:" with the value "\$1,400.00". Below the text boxes is a button labeled "Return to Process New Employee".
- Code Editor:** The file "frmGetInfo.vb" is open, showing a code snippet:

```
107 txtPay.Text = FormatCurrency(wkPay)
108 End Sub
109 End Class
110
```
- Bottom Window:** A form titled "Get Pay In" with a "SMART Ink" watermark. It contains three text boxes: "Id #:" with "111", "Pay/Hr:" with "35", and "Hours:" with "40". Below these are three buttons: "Calculate Pay", "Clear", and "Exit".
- Background:** The Visual Studio interface includes a menu bar (File, Tools, Architecture, Test, Analyze, Window, Help), a toolbar with icons for "Continue", "Code Map", and "Sign in", and a "Tabular Model Explorer" on the right side.
- Annotation:** A dashed pink arrow points from the "Pay:" text box in the top window to the "txtPay.Text" line in the code editor.







calcPayMenu - Microsoft Visual Studio

File Edit View Project Build Debug Team Tools Architecture Test Analyze Window Help

Debug Any CPU Start

Server Explorer Toolbox

frmGetInfo.vb [Design]

Get Pay Information

Process Exit Type Here

Calculate

Reset

Type Here

Id #:

Pay/Hr:

Hours:

MainMenu1

Solution Explorer

Search Solution Explorer (Ctrl+;)

Solution 'calcPayMenu' (1 project)

- VB calcPayMenu
 - References
 - VB AssemblyInfo.vb
 - frmGetInfo.vb
 - frmShowPay.vb
 - VB modInfo.vb

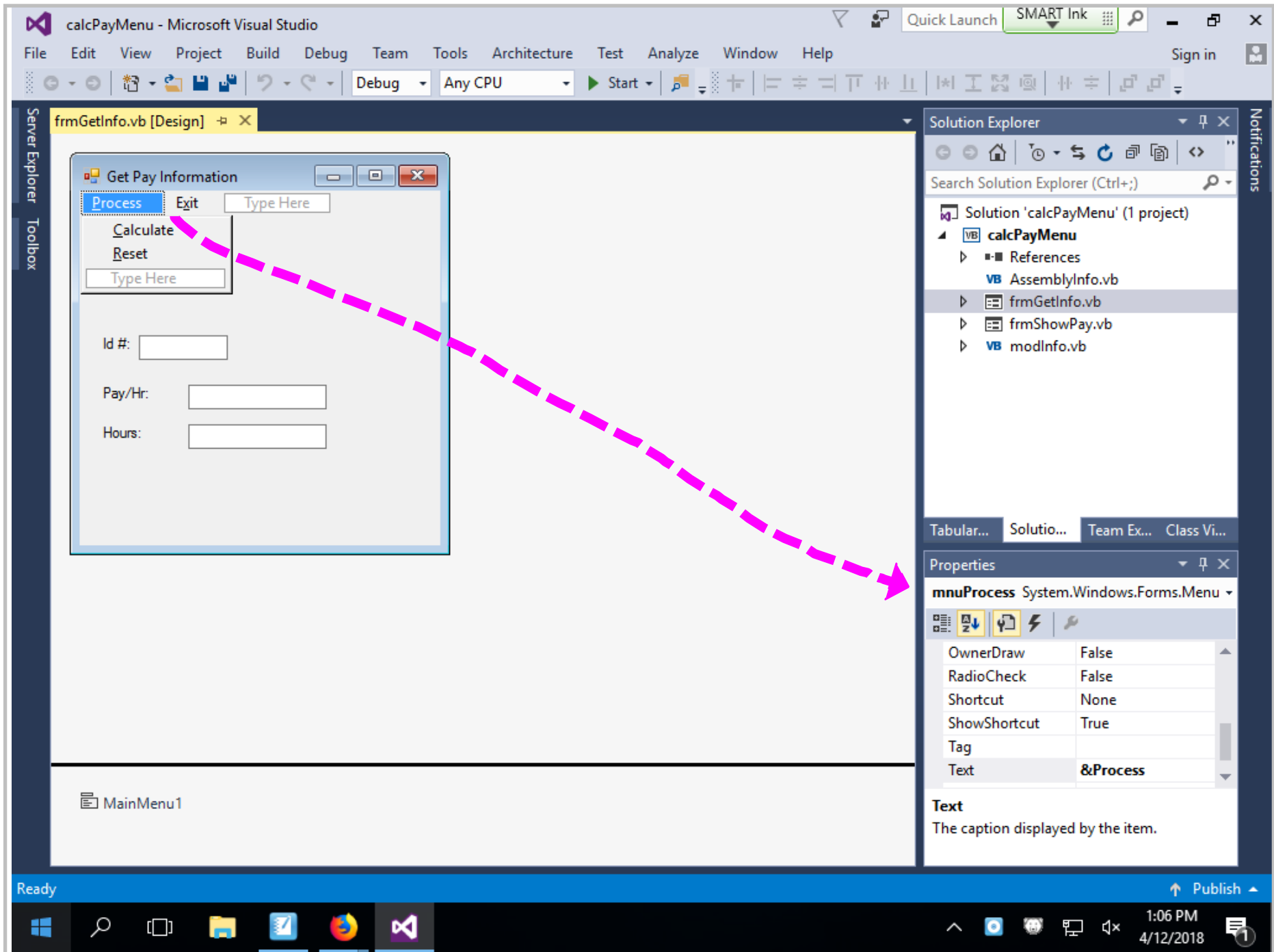
Properties

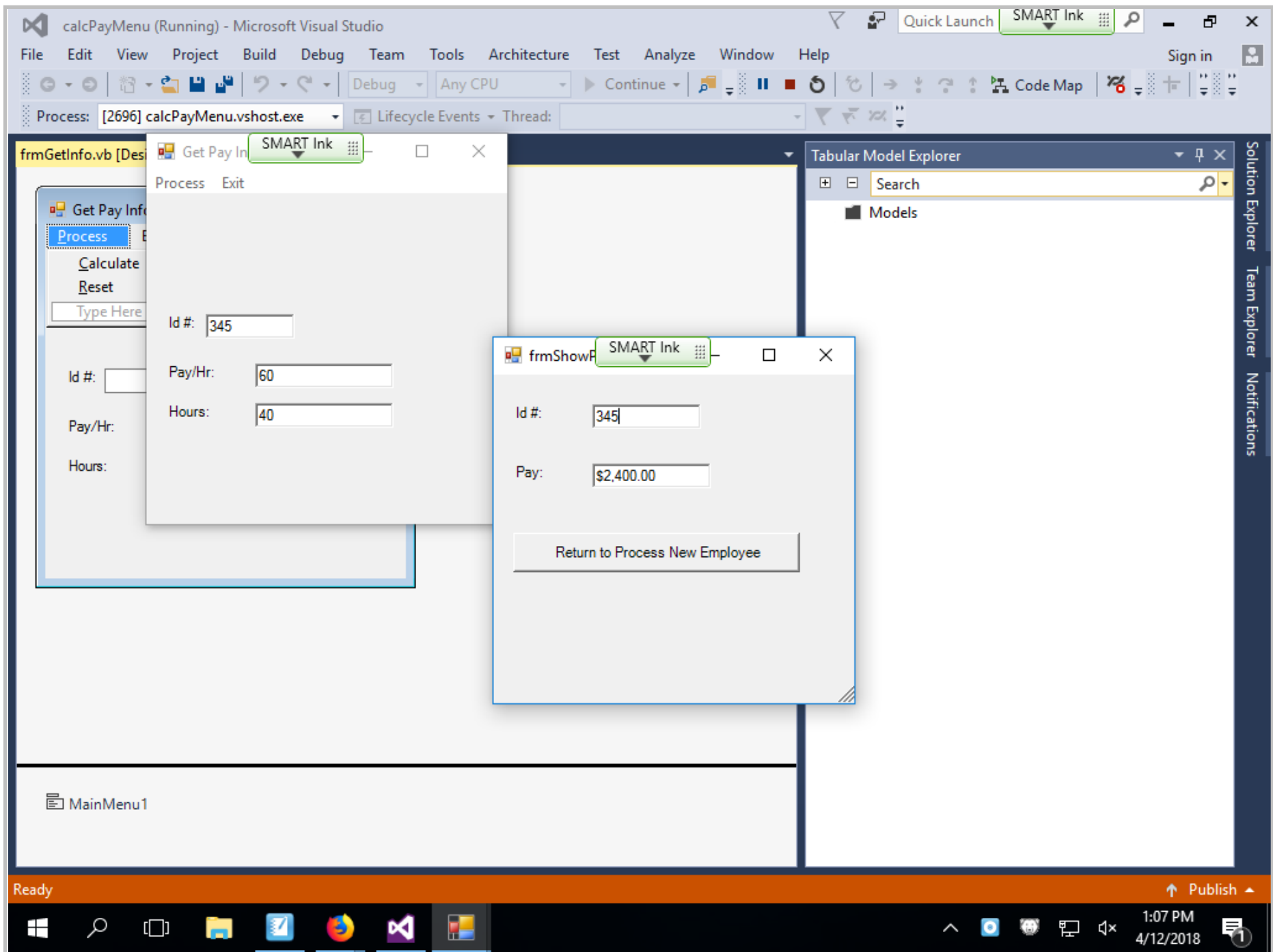
mnuProcess System.Windows.Forms.Menu

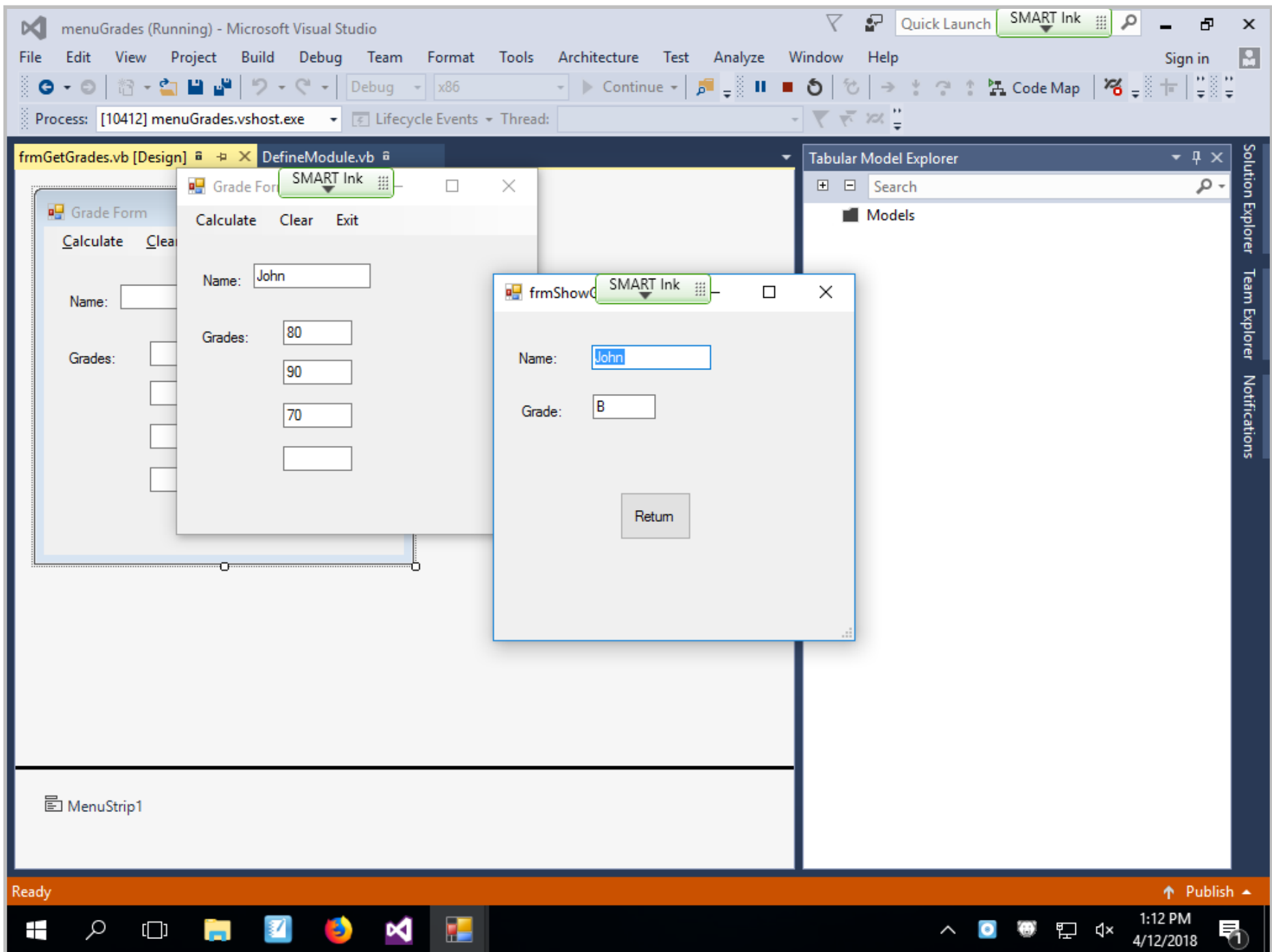
OwnerDraw	False
RadioCheck	False
Shortcut	None
ShowShortcut	True
Tag	
Text	&Process

Text

The caption displayed by the item.







menuGrades - Microsoft Visual Studio

File Edit View Project Build Debug Team Tools Architecture Test Analyze Window Help

Debug x86 Start

frmGetGrades.vb* frmGetGrades.vb [Design]* DefineModule.vb

VB menuGrades frmGetGrades InitializeComponent

```
1 Public Class frmGetGrades
2
3
4     0 references
5     Private Sub mnuGrades3_Click(ByVal sender As System.Object, ByVal e As System.EventArgs)
6         Dim showGradeInstance As New frmShowGrade
7         wkGrade = (CDec(txtGrade1.Text) + CDec(txtGrade2.Text) + CDec(txtGrade3.Text)) / 3
8         CalcLetterGrade()
9         showGradeInstance.txtName.Text = txtName.Text
10        showGradeInstance.txtGrade.Text = wkLetterGrade
11        showGradeInstance.ShowDialog()
12    End Sub
13
14    0 references
15    Private Sub mnuGrades4_Click(ByVal sender As System.Object, ByVal e As System.EventArgs)
16        'Dim showGradeInstance As New frmShowGrade
17        wkGrade = (CDec(txtGrade1.Text) + CDec(txtGrade2.Text) + CDec(txtGrade3.Text)) / 3
18        CalcLetterGrade()
19        frmShowGrade.txtName.Text = txtName.Text
20        frmShowGrade.txtGrade.Text = wkLetterGrade
21        frmShowGrade.ShowDialog()
22    End Sub
23
24    0 references
25    Private Sub mnuExit_Click(ByVal sender As System.Object, ByVal e As System.EventArgs)
26        Me.Close()
27    End Sub
28
29    0 references
30    Private Sub mnuClear_Click(ByVal sender As System.Object, ByVal e As System.EventArgs)
31        txtName.Clear()
32        txtGrade1.Clear()
33        txtGrade2.Clear()
34        txtGrade3.Clear()
35        txtGrade4.Clear()
36    End Sub
37 End Class
```

Solution Explorer

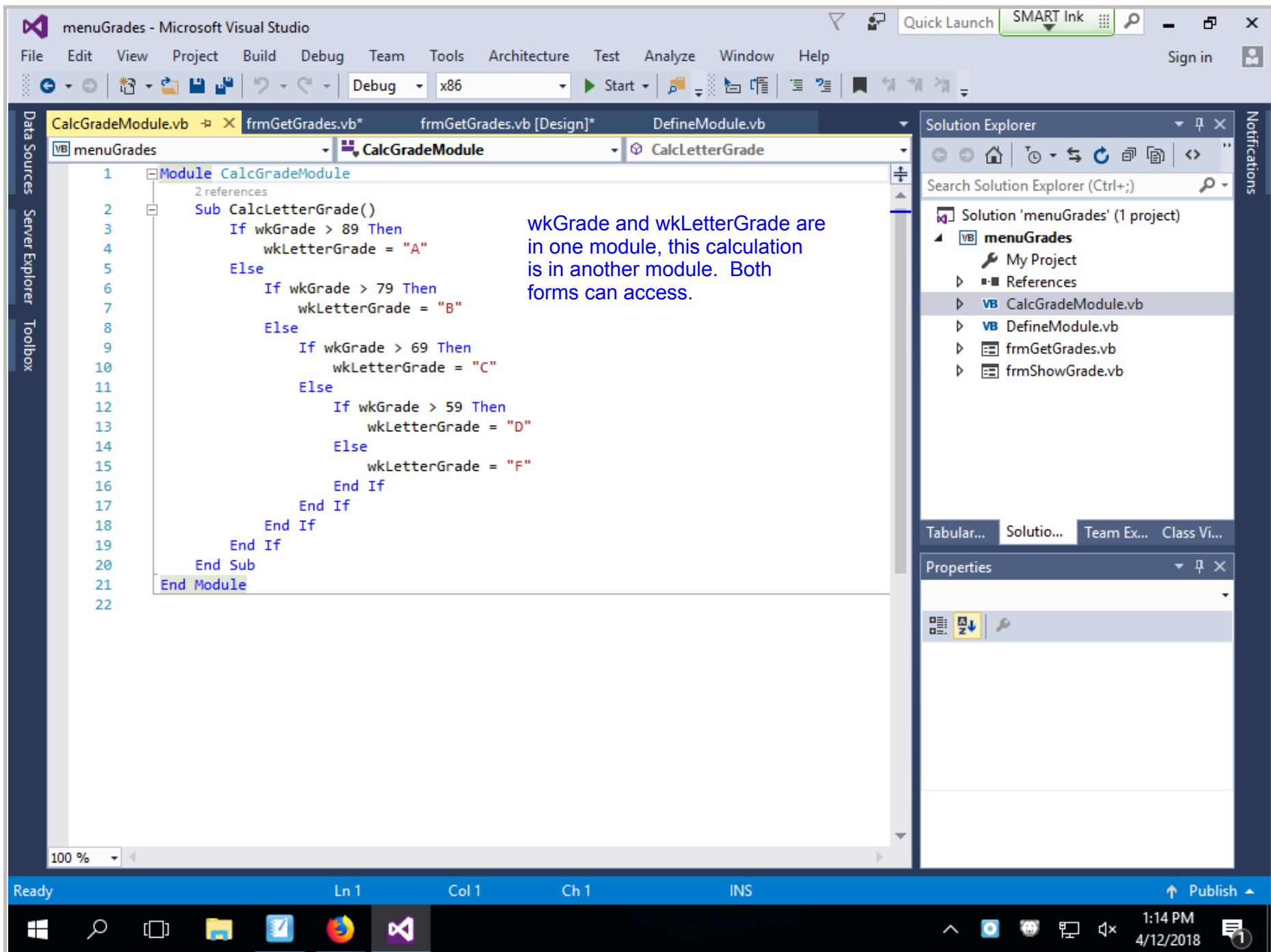
Search Solution Explorer (Ctrl+;)

- Solution 'menuGrades' (1 project)
 - VB menuGrades
 - My Project
 - References
 - VB CalcGradeModule.vb
 - VB DefineModule.vb
 - frmGetGrades.vb
 - frmShowGrade.vb

Properties

Ready Ln 34 Col 1 Ch 1 INS Publish

1:13 PM 4/12/2018



menuGrades - Microsoft Visual Studio

File Edit View Project Build Debug Team Tools Architecture Test Analyze Window Help

Debug x86 Start

VB menuGrades frmGetGrades InitializeComponent

```
1 Public Class frmGetGrades
2
3
4     Private Sub mnuGrades3_Click(ByVal sender As System.Object, ByVal e As System.EventArgs) Handles mnuGrades3.Click
5         Dim showGradeInstance As New frmShowGrade
6         wkGrade = (CDec(txtGrade1.Text) + CDec(txtGrade2.Text) + CDec(txtGrade3.Text)) / 3
7         CalcLetterGrade()
8         showGradeInstance.txtName.Text = txtName.Text
9         showGradeInstance.txtGrade.Text = wkLetterGrade
10        showGradeInstance.ShowDialog()
11    End Sub
12
13    Private Sub mnuGrades4_Click(ByVal sender As System.Object, ByVal e As System.EventArgs) Handles mnuGrades4.Click
14        'Dim showGradeInstance As New frmShowGrade
15        wkGrade = (CDec(txtGrade1.Text) + CDec(txtGrade2.Text) + CDec(txtGrade3.Text)) / 3
16        CalcLetterGrade()
17        frmShowGrade.txtName.Text = txtName.Text
18        frmShowGrade.txtGrade.Text = wkLetterGrade
19        frmShowGrade.ShowDialog()
20    End Sub
21
22    Private Sub mnuExit_Click(ByVal sender As System.Object, ByVal e As System.EventArgs) Handles mnuExit.Click
23        Me.Close()
24    End Sub
25
26    Private Sub mnuClear_Click(ByVal sender As System.Object, ByVal e As System.EventArgs) Handles mnuClear.Click
27        txtName.Clear()
28        txtGrade1.Clear()
29        txtGrade2.Clear()
30        txtGrade3.Clear()
31        txtGrade4.Clear()
32    End Sub
33 End Class
```

Solution Explorer

- Solution 'menuGrades' (1 project)
- VB menuGrades
 - My Project
 - References
 - VB CalcGradeModule.vb
 - VB DefineModule.vb
 - frmGetGrades.vb
 - frmShowGrade.vb

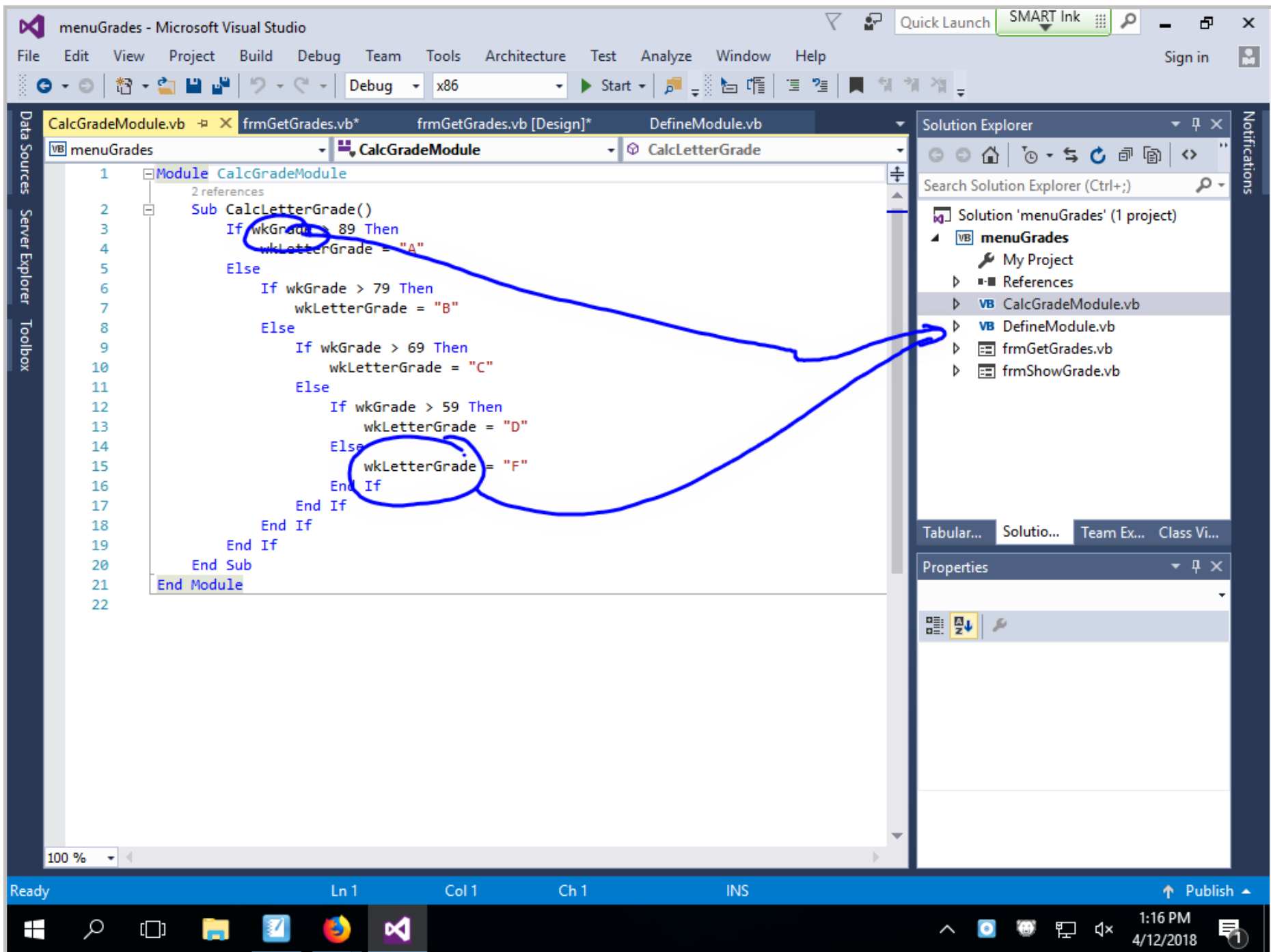
has access to wkGrade

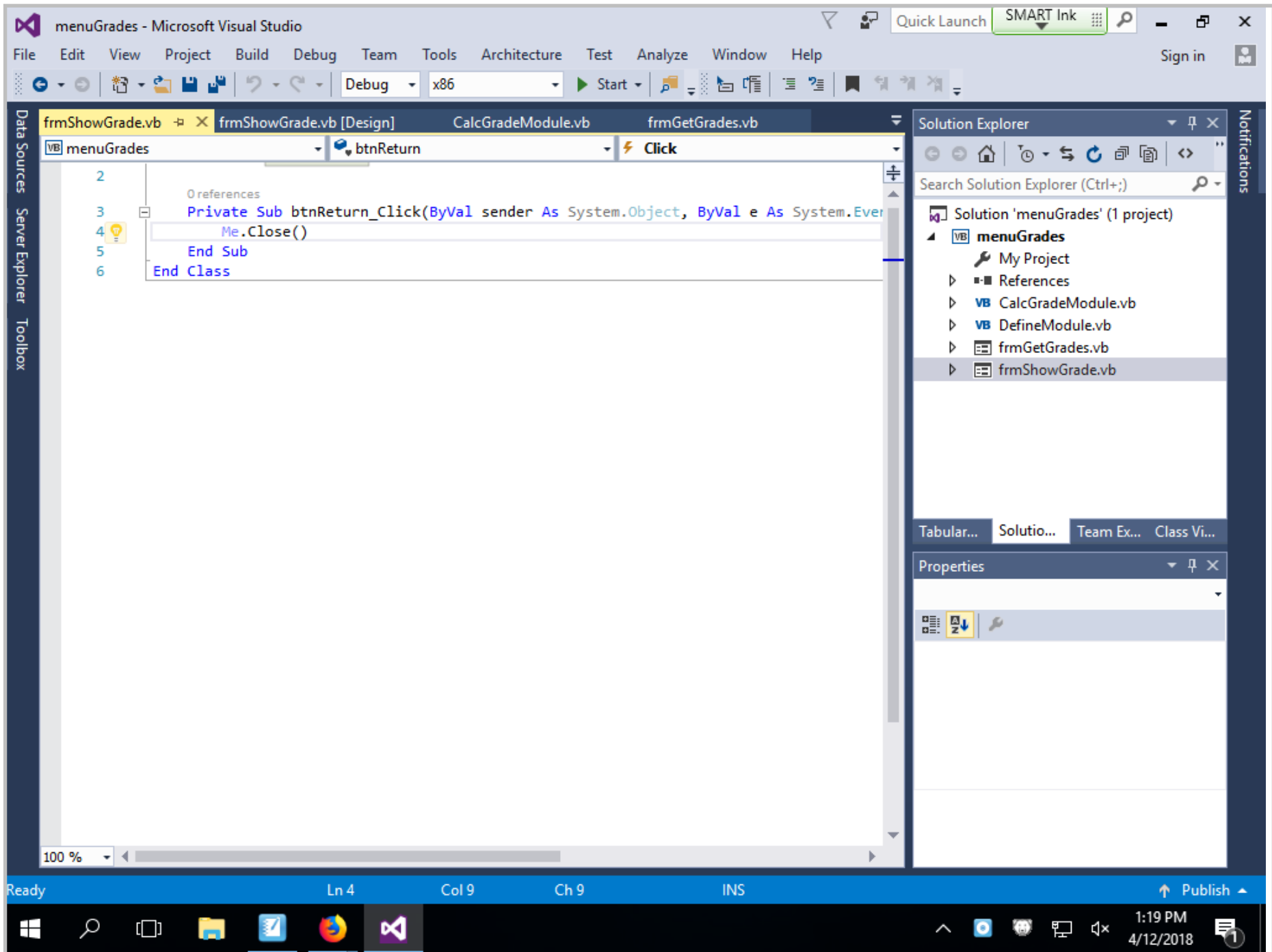
wkGrade

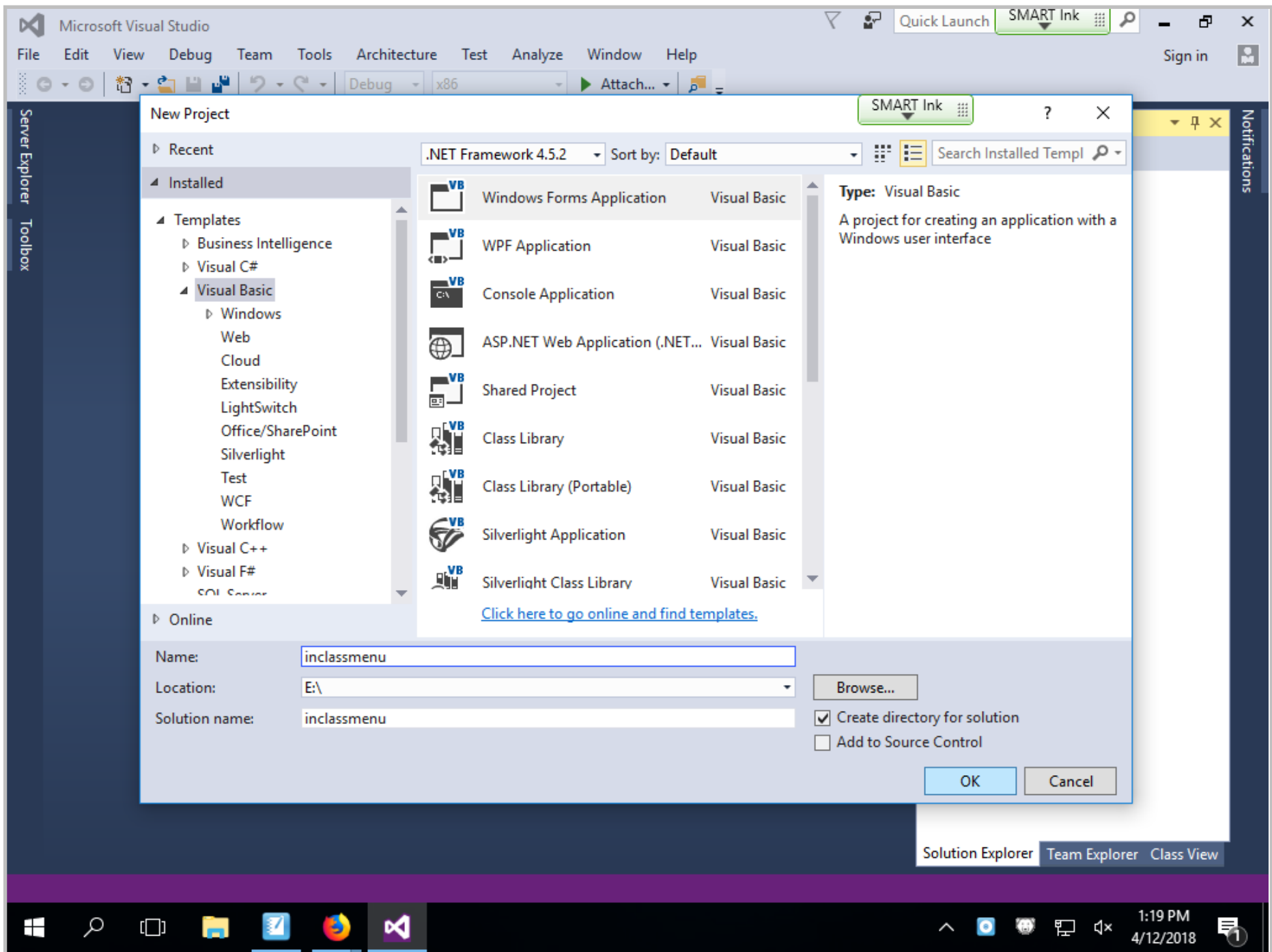
Properties

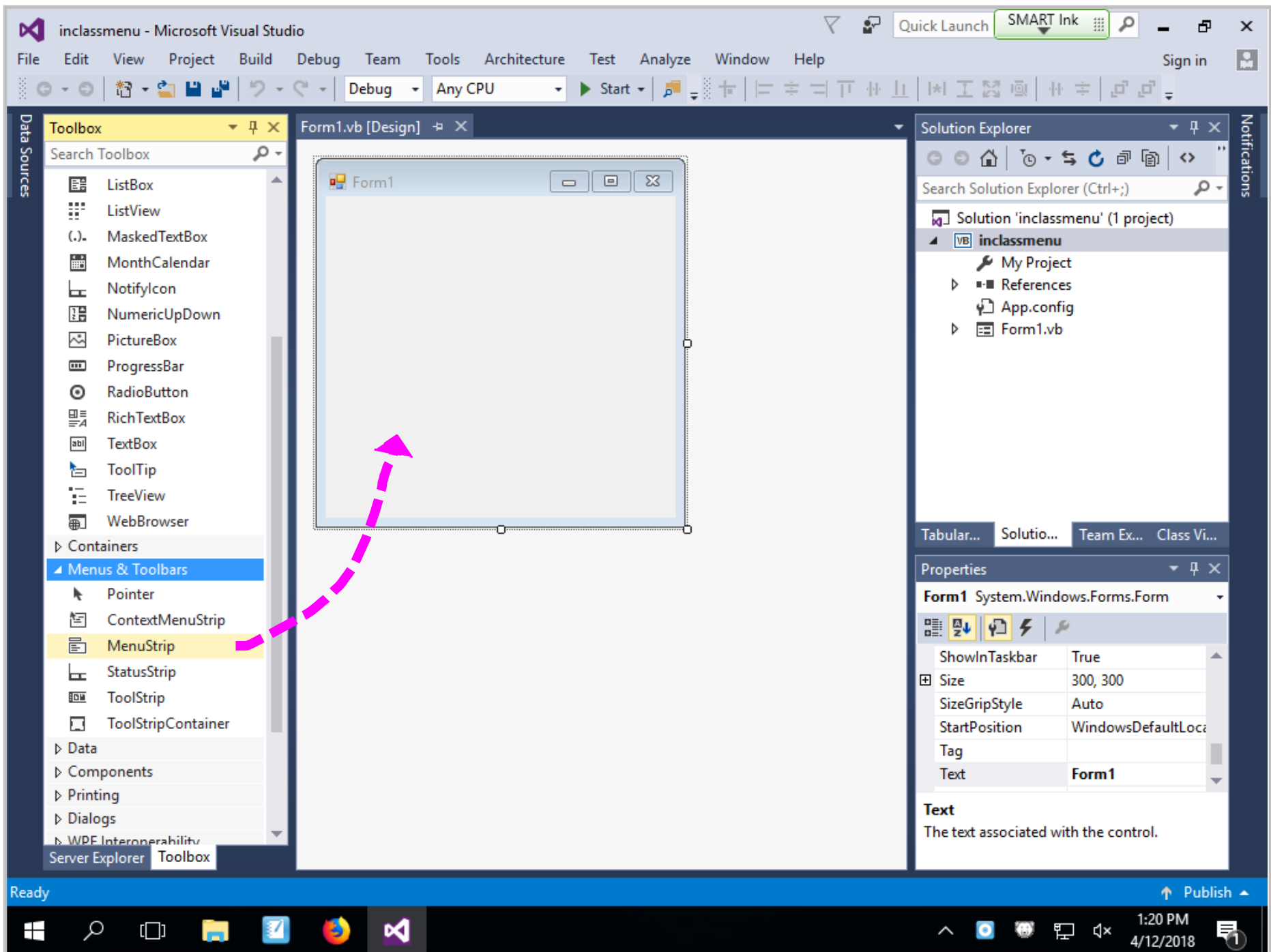
Ready Ln 34 Col 1 Ch 1 INS Publish

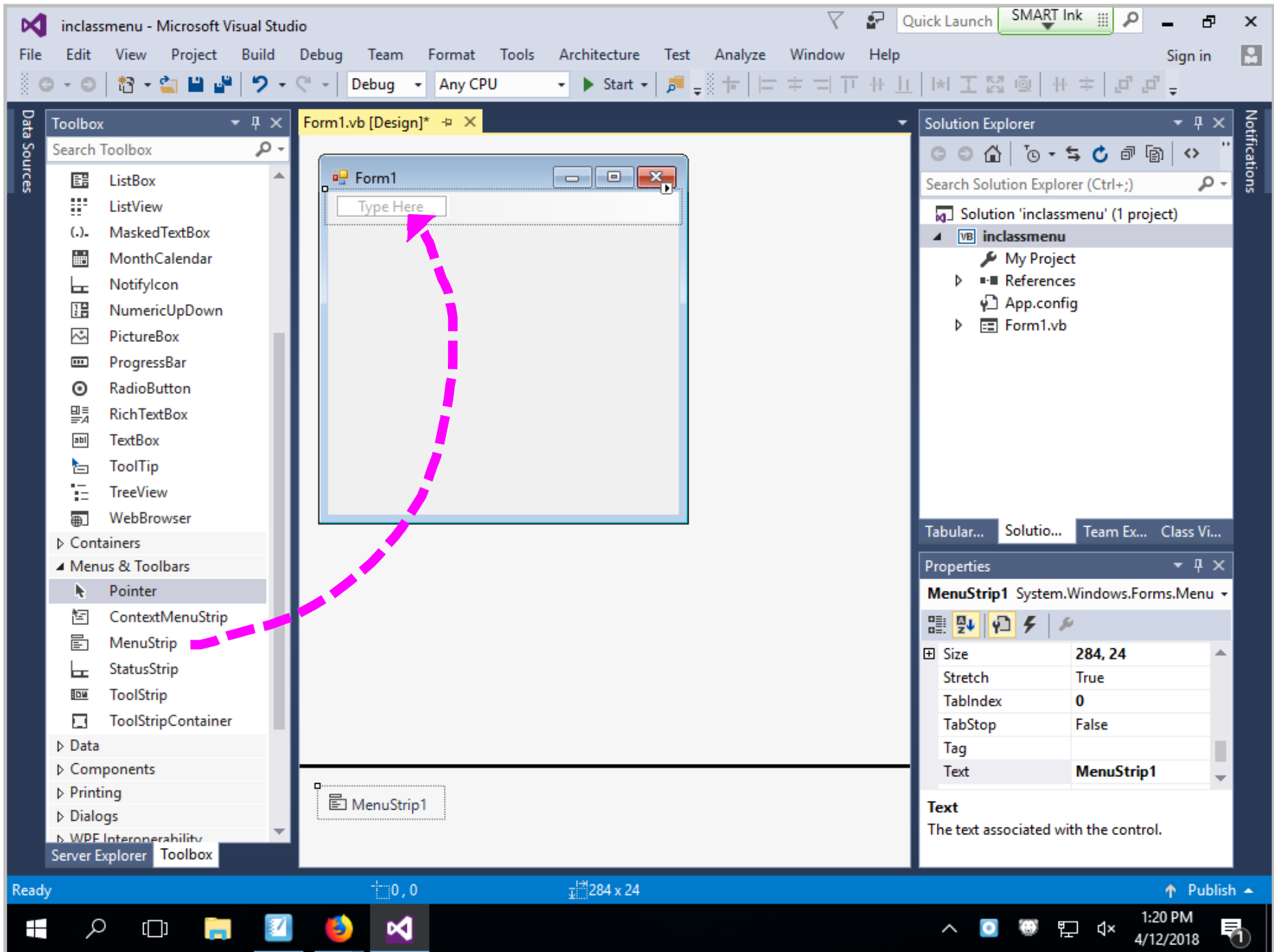
1:15 PM 4/12/2018











inclassmenu - Microsoft Visual Studio

File Edit View Project Build Debug Team Format Tools Architecture Test Analyze Window Help Sign in

Debug Any CPU Start

Form1.vb [Design]*

Form1

Process Type Here

Type Here

MenuStrip1

Solution Explorer

Solution 'inclassmenu' (1 project)

- inclassmenu
 - My Project
 - References
 - App.config
 - Form1.vb

Properties

ProcessToolStripMenuItem System.Windows.Forms.ToolStripItem

ShortcutKeyDisplayString	
ShortcutKeys	None
ShowShortcutKeys	True
Size	59, 20
Tag	
Text	Process

Text
The text to display on the item.

Ready 6, 2 59 x 20 Publish

1:21 PM 4/12/2018

