

CIS 231 – Windows 10 Install –Lab # 3

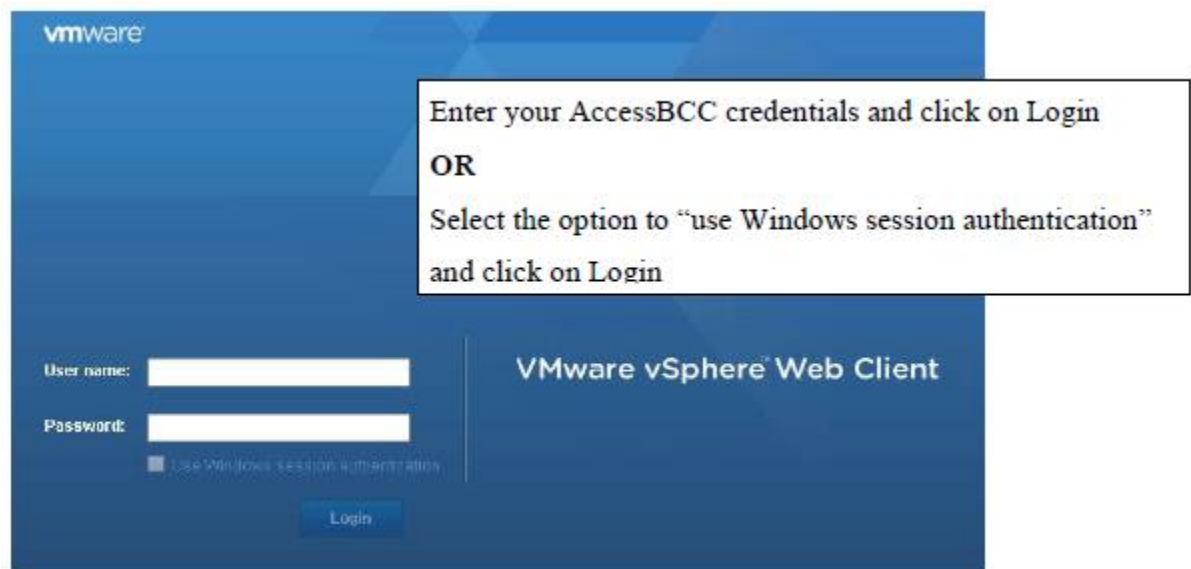
- 1) To avoid certain problems later in the lab, use Chrome as your browser: open this url:
<https://vweb.bristolcc.edu>
- 2) Here again, to avoid certain problems later in the lab, select HTML5



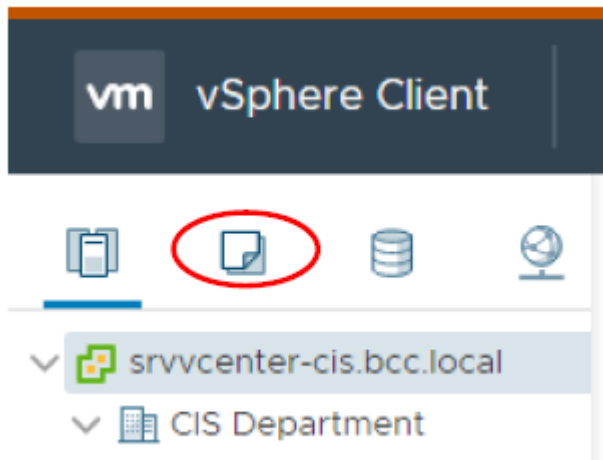
- At the “your connection is not private” message, click **Advanced**
- Click “**proceed to vweb.bristol.edu (unsafe)**”
- Click **Login to vSphere Web client**
- You’ll once again see the “your connection is not private” – click **Advanced** again and, again, click on the “**proceed to vweb.bristolcc.edu (unsafe)**”
- At the External Protocol Request, check off the “**remember my choice**” check box and select “**Launch application**”

This will bring you to the login screen.

- 3) Login as you’ve done in the past.



- 4) Select the *VMs and Templates* icon at the top of the left navigation pane:



- 5) If necessary, expand *srvvcenter-cis.bcc.local* and *CIS Department* nodes and navigate to the *CIS231* folder. You should find a folder within this folder assigned to you; the folder name will include your name.

- 6) Right-click on the folder and select “**New Virtual Machine**”

- 7) Select **Create a new virtual machine** and click **Next**.

- 8) **Select a name and folder** for your machine:

Name: Use your initials followed by 231-WIN10. (i.e.: if your initials are JMT then your virtual machine’s name would be: JMT-231-WIN10.

Select a location: Confirm your *CIS231* folder is selected.

- 9) Click **Next**

- 10) At the “Select a compute source” screen, **select K-building** and Click **Next**

Note: You do not need to expand K-Building. If you do, you will need to select one of the two consoles presented. Pick either one, it doesn’t matter.

- 11) Select ***EQL-CIS-Volume1*** for the destination storage and click **Next**

- 12) Select **ESX1 6.5 or later** as the *Compatible with* setting and click **Next**.

- 13) Select **Windows** as the Guest Operating System and select the version of Windows being installed.

- 14) Click **Next**.

- 15) At the Customize hardware screen, to the right of New CD/DVD Drive, use the drop-down arrow near the **Client Device** box to select **Datastore ISO File**

- 16) Expand **EQL-CIS-Images / Image Files** in the Datastores Box.

17) Select Windows from the Datastores box.



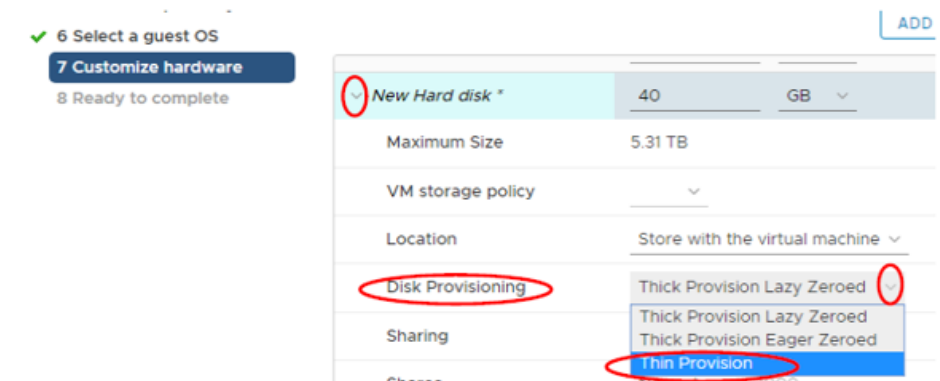
18) Select the Windows the folder that matches the OS that you're installing and select the appropriate ISO file from within that folder and click **OK**.

19) You should now be back at the Customize Virtual Hardware screen. Check the “**connect**” box near the CD/DVD setting.



20) While still at the Customize Hardware screen, **expand** “**New Hard disk**” and, change the size to 50 GB and select **Thin Provision**.

(Don't change the default size of the drive.)



21) Click on **Next** and then click on **Finish**

Install Windows 10

- 1) **Right-Click** on the **Virtual Machine** that you just created and select **Power / Power On**
- 2) **Click ON** the **Virtual Machine** and select **Launch Web Console** from the middle pane

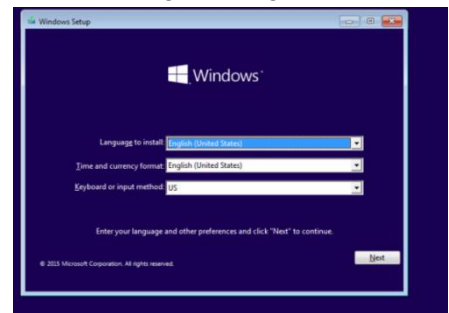
If you see a security certificate message like the one you saw when initially connecting to the client, respond the same way.

NOTE: Your mouse will not be very responsive until you install vmware tools. If necessary, use the tab key, enter key or keyboard shortcuts to make selections from this point on

- 3) At the boot manager screen, select boot normally by pressing the **enter** key.
You will immediately see the message: **“Press Any Key to boot from CD”**,

Do exactly that: Press any key to boot from CD

- 4) You should eventually see a window like the one displayed below. If you see this window, accept the Language, Time, Currency and Keyboard defaults values (English, English and US).
Use the Tab key to move to the “Next” box and press enter.



- 5) Select **Install Now**.
- 6) Don't enter the product key; we'll enter it later when we sysprep the machine. Select **I don't have a product key**.
- 7) Select **Windows 10 Pro** (6th on list) and select **Next**.
- 8) Accept the License Terms (use the spacebar to check the check box) and then select **Next**.
- 9) Use the down arrow to select **Custom: Install Windows only (advanced)** and press Enter
- 10) At the next screen, with the Unallocated Drive selected, select **Next**. After about 5 minutes the system will reboot and you'll eventually see the “Let's start with region” screen.
- 11) At the “Let's start with region.” screen, with **United States** selected, choose **Yes**
- 12) At the “Is this the right keyboard layout” screen, with **US** selected, choose **yes**.
- 13) **Skip** the option to add a second keyboard layout.
- 14) At the “How would you like to setup?” screen, select **“Setup for an organization”** and then select **Next**.
- 15) At the “sign in with Microsoft” screen, select **Domain join instead**.
- 16) At the “Who's going to use this PC?” screen, enter **CIS231Student** and select **Next**.
- 17) Use **Microsoft!** as the password and select **Next**, confirm the password and select **Next**.

18) At the “Create security questions for this account” screen, pick whatever security questions you want. You’ll need to pick 3. When done, select **Next**.

19) At the **Cortona** screen select **No**

20) At the “choose privacy settings for your device screen”, take some time to read through the description of each of these settings. You decide if you want to turn off a setting. You can always change the setting later. Select **Accept**

Real world... there are quite a few ‘big brother’ type settings that are automatically turned one. To learn more about some of these settings, refer to the privacy links on the supplemental materials page to learn more about these settings.

21) After a few minutes you’ll see the Edge Browser opened on a Windows 10 Desktop. You can close the browser.

22) Install VMWare tools:

- Return to the **Vsphere web client tab** within the browser.
- Right-click on the virtual machine / Guest OS / **Install VmWare tools**
- Select **Mount** from the ‘Install VMware tools” box
- Go back to the virtual machine’s console screen /tab within the browser. An **AutoPlay** dialog box should eventually be displayed (be patient – it sometimes takes a while to open). Select the **Run Setup** to launch the installation wizard. If it doesn’t open, use Windows Explorer to get to the CD Drive; run setup from there.
- Use the wizard to perform a **typical** installation of the VmWare Tools. When the installation is complete you will be prompted to restart the OS. Restart now. Log in and confirm you have control of the mouse.

23) Login as the CIS231student and enable the local Administrator account. Set the password to Microsoft! (Computer management / System Tools / Local Users and Groups / Users / Administrator; right-click to set password, properties to enable)

24) Rename the computer to XXX-WIN10. Replace XXX with your initials. (Sysdm.cpl / computer name / change. This will require a reboot.) Restart now.

25) Logoff and login as the local Administrator – just to make sure you can.

After completing all of the above, confirm to me – by sending me screenshots in a word document named “windows 10 screenshots”. Label each screenshot accordingly.

- you can access the Internet from this virtual operating system
- you’ve installed the VmWare Tools
- you have NOT activated your key
- you’ve named your computer as specified
- you’ve enabled the local administrator

Additional things you must complete on this Virtual OS before we join the computer to the domain are listed below. This should be completed outside of class time and should be done while before the next in-class lab. Links to some of the things you’ll need are available on the supplemental materials page on the class web site.


- DO NOT ACTIVATE THE PRODUCT KEY

- Within Control Panel / System and Security / Power Options / Change the Plan settings for the Balanced plan: (You can also get here from Start / Settings / System / Power & sleep)

[Change settings for the plan: Balanced](#)

Choose the sleep and display settings that you want your computer

 Turn off the display:

 Put the computer to sleep:

- Login as the CIS231 Student account
Create a Downloads folder at the root of drive C: and put all downloaded files and configuration files in this folder.
- Don't install anything while logged in as CIS231 – just download everything.
- Download Remote Administrative tools for windows 10, ADK, Libre Office, Notepad++ and Firefox (links for all are available on the supplemental materials of the class website).
- **Login as the local administrator**
 - Install libre office, notepad ++ and Firefox
 - configure the local administrator's profile; i.e., modify the start menu, set a default homepage in the browser, etc.
 - Don't install ADK or Remote Admin Tools – these will be part of the next in-class lab.